

NAVIGA

World Organisation for Modelshipbuilding and Modelshipsport
Weltorganisation für Schiffsmodellbau und Schiffsmodellsport
Organisation Mondiale de Navimodellisme et de Sport Nautique

NEWS

INFORMATION 1 - 2016



Inhalt / Content

In eigener Sache / Concerning own affair

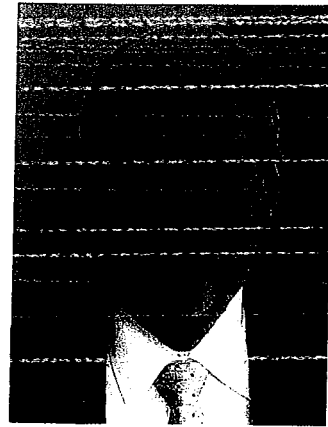
Wichtige Informationen / important informations

Berichte / reports

Verschiedenes / Several things

**Dieter Matysik
Michael Dahm**

Copyright NAVIGA 2016



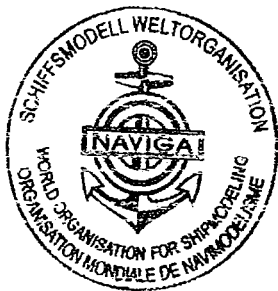
Ladies and gentlemen,
dear friends

Welcome to you all. The year 2016 has begun with a surprising information for us. Our vice president Peter Schaft has finished his activities. He can no longer work for NAVIGA and the FSR sport. We regret this very much. I thank Peter for his work. He was involved in the sport for many years. During the next general meeting we will elect a successor.

Our work continues. Soon the european championship takes place in Poland, also the world championship there next year. The FSR sport is secured in the NAVIGA. I will be in Poland and support the organizers. But we have further great events this year, namely three further european championships. In september we will meet in Russia for the competition of section C. I'm looking forward to meeting you there. A nice time and much success for you all.

Dieter Matysik

President



Villiers Le Bel on the 27th June 2016

Dear Mr. Wang Li Wei

In reviewing the current list of Naviga International Judges, we have come to understand that an international judge licence for the M section was issued wrongfully to the following person :

Name : Tan Wei Candy

Address : Room 201 building 28 , No.2 Yard youcheng 6th Road, Maiming City 525000 Guangdong

Email : sales@tppower.com Candy_tanwei_11@126.com

China Judge Licence No CHN-07

After deeper investigation into this matter, we have come to know that the Chinese Marine Model Association has strict rules in approving an international judge licence . And this person has no experience in judging and never been approved by the Chinese federation at all.

Naviga respects the chinese Marine Model Association and will only admit an application which is approved by them. All the applications under personal or business benefits must be rejected and condemned by Naviga.

As a result, we Naviga declare the licence of Tan Wei Candy invalid and we cancel this licence immediatly.

In the meantime, we Naviga also apologise for carelessness in this matter and we will offer support to China to investigate this matter if necessary. Hope we have dealt with this matter in full satisfactory fashion.

With highest regards

General Secretary Naviga

Jean-Marc VALLEE

M section Leader

Walter GEENS



 Argentina Class FSR Liga De Motonautica Radio Controllada De La Rep. Chairman Dr. Juan Carlos Arroyo Mail jcarroyo@estudioarroyo.com Website ??	 Armenia Classes A/B - M Shipsmodel Sport Federation of Armenia Chairman Shahazizvan, Hrachva Mail hshahaziz@yahoo.com Website ??	 Austria Classes FSR-NS-S Allgemeiner Schiffsmodellbau Verband Secretary Mrs. Schmidt, Dorothea Mail kadoschmidt@MYC-Wien.at Website http://aoesmv.dyndns.org
 Belarus Republic Classes FSR - C - NS - S Byelorussian Shipmodeling Sport Federation Lieder C section Kalmykov, Dmitrij Mail dmkalmykov@km.ru Website http://belfss.org/	 Belgium Classes C-FSR-M-NS Koninklijke Federatie der Model Yacht Clubs van België Secretary Geeraerts Luc Mail geeraerts.luc@telenet.be Website http://users.telenet.be	 Bulgaria Classes A/B-C-FSR-M-NS-S Bulgarian Federation of modelshipsport Secretary Kolia Panajotov Mail info@mmplastik.com Website http://www.bfkks.com
 China Classes C-FSR-M-NS-S Chinese Marine Model Association Secretary Mrs. Jiao Mail mx_hhmx@126.com Website ??	 Croatia Class C Croatian Modelers Association Chairman Mladen Mitic Mail mladenmitic@net.hr Website ??	 Czech Republic Classes C-FSR-M-NS-S Association of Modellers of Czech Republic Secretary Lejsek, Jiri Mail lejsek.kostelec@iol.cz Website http://www.svazmodelaru.cz
 Denmark Class NS SKALAMODELBÅDE DANMARK af 1993 Chairman Reichert, Thomas Mail reichert@post12.tele.dk Website ??	 Estonia Classes C-FSR-NS Estonian Modelship Union Chairmen Kalberg Ago Mail ago.kalberg@gmail.com Website ??	 Finnland Class FSR SPVL/SMBF Chairman Sulin, Jorma Mail jorma.sulin@kolumbus.fi Website ??
 France Classes A/B-C-FSR-M-NS-S Fédération de France de Modélisme Naval Chairman Didier, Jean Mail jeandidierfr@yahoo.fr Website http://www.ffmn.fr	 Germany Classes A/B-C-FSR-M-NS-S NAUTICUS e.V. Secretary Dahm, Elisabeth Mail elisabethdahm@t-online.de Website http://www.nauticus.info	 Great Britain Classes A/B-FSR-M Model Power Boat Association Intern. Secretary Robinson Stuart Mail robinsons.10@btinternet.com Website http://www.mpba.org.uk
 Hong Kong Classes FSR-M-C-A/B-NS-S Hong Kong Model Techniquo Association Chairman Ip Nai Yun Mail deehkmta@gmail.com Website http://www.hkmta.net	 Hungary Classes C-FSR-M-NS-S Hungarian Association of Modellers Contact person Dr. Húvös, Ferenc Mail huvosferenc@mokk.hu Website http://www.modelsport.hu	 Italia Classes C-FSR-M-NS-S Federazione Italiana Navimodel Chairman Bignami luciano Mail elenaval@alice.it Website http://www.navimodel.it
 Kazakhstan Class C-NS Kazakhstan Organisation for Modelshipbuilding and Modelshipsport Chairman Sergey Okonechnikov Mail fsmkz@mail.ru Website ??	 Latvia Classes FSR-M-NS XXX Contact person Basevs Aleksandrs Mail bashev@uninet.lv Website ??	 Lithuania Classes FSR-M XXX Contact person Fogel Alex Mail overasarydas@hotmail.com Website ??

 <p>Luxembourg Classes FSR-M-S</p> <p>Les Modelistes Nautiques du Luxembourg</p> <p>Chairman Lassine Edouard Mail edouardo@pt.lu Website ??</p>	 <p>Netherlands Classes C-FSR-M-NS-S</p> <p>General Dutch Shipmodel Association</p> <p>Intern.Secretary Onderdelinden, Jos Mail onderdelinden22@online.nl Website http://www.ansf.nl</p>	 <p>New Zealand Class FSR</p> <p>New Zealand NAVIGA Association</p> <p>Secretary Mrs. Kockott Kim Mail nznaviga@gmail.com Website http://www.nznaviga.org</p>
 <p>Norway Classes FSR-M</p> <p>Norwegian Model Power Boat Association</p> <p>Chairman Hatlevoll Morten Mail nd4spd_mini@hotmail.com Website http://www.nmsbf.org</p>	 <p>Poland Classes C-FSR-M-NS-S</p> <p>LIGA OBRONY KRAJU Centralna Komisja Modelarstwa</p> <p>Chairman Mellon Wlodzimierz Mail sport.zgWarszawa@lok.org.pl Website xxx</p>	 <p>Romania Classes C-FSR-M-NS-S</p> <p>XXX</p> <p>Chairman ?? Mail ?? Website ??</p>
 <p>Russia Classes A/B-C-FSR-M-NS-S</p> <p>Federation of Ship-Modeling Sport of Russia</p> <p>Chairman Zhornik, Vladimir Mail qv-0759@mail.ru Website http://www.fsmr.ru</p>	 <p>Serbia Class FSR</p> <p>Boatmodeling Association of Serbia</p> <p>Chairman Pazin Slobodan Mail spazin@sbb.rs Website ??</p>	 <p>Slovenia Classes FSR-S</p> <p>Zveza za tehnicno kulturo Slovenije</p> <p>Secretary Maticna Stevika Mail info@zotks.si Website http://www.zotks.si</p>
 <p>Slovakia Classes FSR-M-NS-C-S</p> <p>Model Union of Slovakia</p> <p>General Secretary Juraj Buda Mail juraj.buda@zvazmodelarov.sk Website ??</p>	 <p>Spain Class FSR</p> <p>Club R.C.Motonáutica de Madrid</p> <p>Chairman Gonzalez Jose Ignacio Mail fsmadrid@gmail.com Website http://www.fsmadrid.com</p>	 <p>Sweden Classes FSR-M</p> <p>SVENSKA MODELLBÄTSFÖRBUNDET</p> <p>Chairman Torbjörn, Andresen Mail torbjorn.andresen@telia.com Website http://www.smbf.info</p>
 <p>Switzerland Class A/B-C-FSR-M-NS-S</p> <p>Swiss Federation of ship modeling</p> <p>Chairman Heinz Althaus Mail sekretariat@ssmv.ch Website www.ssmv.ch</p>	 <p>Thailand Class M</p> <p>XXX</p> <p>Chairman Thiele, Ralf Mail service@tsp-limited.com Website ??</p>	 <p>Ukraine Classes A/B-C-FSR-M-NS-S</p> <p>Ukrainian National Federation for Modelshipbuilding and Modelsport</p> <p>Chairman Demidenko, Sergii Mail sdemidenko@yandex.ua Website http://www.fsssu.org.ua</p>
 <p>Uzbekistan Class C</p> <p>XXX</p> <p>Chairman xxx ?? Mail ?? Website ??</p>		

A B

1.5.4. Before each race the starting-point judge must check the condition of cables.

1.6. Pylon

1.6.1. The pylon (a thick steel tube) must be firmly fixed to the centre of the racing circuit.

1.6.2. In order to hitch the cable, easy revolving ball-bearing must be mounted, equipped with a hitching ring. The distance between the centres of the pylon and the hitching ring is 152 mm.

1.6.3. The hitching ring must be fixed at a height of 500 mm +/- 20 mm above water level. That height must not change during a race.

1.7. Racing area, length of circuit and checking

1.7.1. The racing circuit must be a calm water surface so that the competitor, standing in water, can launch his model. The water at the starting-point must be from 600 to 800mm deep. The racing circuit must correspond to a figure as per Annex 2.

1.7.2. The length of the racing circuit is 500 m (five laps) and is made from:

- Distance from the pylon axis to the ball-bearings hitching ring: 152 mm
- Length of the cable between its coupling hooks: 14 552 mm
- Bridle with its ring: 1 220 mm
- Total radius: 15 924 mm
- Total diameter: 31 848 mm

1.7.3. The total length of the five laps is: $31848 \times 3,14 \times 5 = 500000 \text{ mm} = 500 \text{ m}$

1.7.4. Before the beginning of a race the starting-point judge personally or through the judges must check:

- The installation and dimensions of the cable, the ball-bearings hitching ring
- The length and condition of the bridle
- Diameter of the exhaust port
- The buoyancy of the models B1 and B1E

1.7.5. During a race, the starting-point judge must make sure that the cables are in conformity with the classes. If necessary, he must perform intermediary safety checks.

1.8. Judges team at the starting-point

The Judges team at the starting-point consists of:

- ❖ A starting-point judge as chief pontoon judge
- ❖ The secretary
- ❖ Three judges as Time-Keepers
- ❖ Two judges of the fuel distribution
- ❖ A judge in charge of bridle checking and diameter of the exhaust port

1.9. Minimum equipment on the starting-point for models A/B

- A pylon mast with adjustable ball-bearings hitching ring, which is fixed by the height as per 1.6.3;
- A starting platform/pontoon;
- Leading post;
- A table and chairs for the starting-point judge and the secretary, sheltered from the weather and isolated by a fence;
- Three stop-watches;
- One tensile strength measuring apparatus;
- One 15 m long measuring tape;
- A caliper-gauge or micrometer-caliper to measure the diameter of cables and of the exhaust port;
- A fuel-supplying system fitted with a fire-fighting device compatible with the fuel used; placed within a 5m safety perimeter, where a legible and visible notice will forbid anyone to smoke or make a fire;
- One boat;
- One first-aid kit placed in a conspicuous position;
- One notice-board showing the race circuit;
- One notice-board showing the provisional results.

1.10. Progress of the races

1.10.1. A racing event comprises five races.

1.10.2. The preparation time begins when the competitor hitches his model to the cable, which operation is ordered and controlled by the starting-point judge.

1.10.3. The competitor can have two assistants during the start.

1.10.4. It is the competitor's discretion to launch the model in the clock-wise or counter clock-wise direction.

1.10.5. Each competitor is only allowed one try within each launch. The model cannot be launched twice during preparation time, even if the competitor succeeds in recovering his model after a false start.

1.10.6. When a model is racing, the competitor may use all his preparation time. However, he must ask clearly and in time (i.e. by raising his arm) for the beginning of timing according to the rules.

1.10.7. Timing can be conducted by electronic means or by manual measurement, by means of stopwatches:

- In case of electronic timekeeping two timekeepers measure the time additionally by stopwatches.
- Manual measurement is conducted by three timekeepers.

1.10.8. In manual measurement the three scores must not differ by more than 0.1 sec. Time score deviating by more than 0,1 second shall be deleted. The actual result is equal to the mean of the remaining two. If the difference between the two stop-watches is more than 0,1 sec, then the start shall be repeated. If two of the three stopwatches show the same time, the third aberrant time is deleted. If one stopwatch fails, then the result is determined based on the time of the other two stopwatches as previous. If two stopwatches of the three fail, the start shall be repeated.

The repetition time of the start is appointed by the starting-point judge.

1.10.9. In the electronic measurement only, obtained in this way, the result is written in the assessment. At failure of electronic readings, the actual result is equal to the mean of the two stop-watches, as described above.

1.10.10. Before the start of the competition the starting-point judge tests the accuracy of the measuring time electronic system and the stopwatches. The starting-point judge gives permit for the start only if satisfied that the electronic system and the stop-watches show the same reading.

1.10.11 The stop-watches are activated when the model crosses the line between the pylon and the leading post (see Annex 2).

1.10.12 One of the 3 time-keepers counts in a loud voice the number of laps made by the model. The stop-watches are stopped when the model has finished its fifth lap.

1.10.13 If a model finishes its race before the timing begins or if it does not make the five laps during the timing, its try is nullified (false start) and cannot be made again.

1.10.14 During the time of evaluation, a model of classes B1, B1E must touch the surface of the water at least twice at each lap.

1.10.15 If during a race something disjoints from the model the result shall not be considered.

1.11. Placing

1.11.1. The race with the best time is registered in evaluating and determining of the placing.

1.11.2. If several competitors have achieved the same best time (correspondingly speed), the definition of places is accepted according to the results of the second, third better run, etc. If the placing is not determined so, then these competitors receive the same places.

1.11.3. The times performed will be converted according to the formula speed (in km/h) = $1800/\text{Time (in second)}$. That speed shall be the result of the race.

1.12. List of results

The results sheets must include:

- The kind of race
- The class
- The competitor's surname, name, the country of competitor
- The model and registration number
- The result of each race (the time in seconds and in a fraction of a second, the speed in km/h)
- The best result
- The final ranking
- The judges' names and countries
- The signature of the chief judge, starting-point judge and secretary.

2.0. **SPORT-TECHNICAL PRESCRIPTION**

2.1. Definition concerning the competitors

2.1.1. Age groups

In the racing events organized according to the NAVIGA Rules competitors are divided into two age brackets: Juniors and Seniors.

2.2. Registration of the competitors and their models

2.2.1. The competitors must be entered for continental or world championships through their federation, member of NAVIGA.

2.2.2. Each competitor may register two models in each class and participate with them.

2.2.3. A Group AE model meeting the construction requirements for two or for all three classes in the group can only be registered and start in one of the classes. Changing over to another class in the course of the competition is not permitted.

2.2.4. Models with electric motors in classes A1E, and B1E can use radio control at the beginning and end of their run. During the timed part of the run the transmitter cannot be used to control any part of the model. It must be held above the competitor's head or placed on the timekeepers' table and in full view of the judges. Failure to observe this rule will lead to disqualification.

2.2.5. The weight of the models is checked during the registration.

2.2.6. The competitor is allowed to choose the model he uses for a race. He is allowed to bring the two models to the preparation area but he is allowed to bring only one model to the starting point. After the beginning of the preparation time he is not allowed to change models.

2.2.7. The competition model and the replacement model must bear the registration number.

2.2.8. The lasting registration number and the distinctive sign of the country must be fixed permanently and be indelible on the hull of each model:

XYZ – H3

where XYZ is the distinctive sign of the country,

H3 is the National Registration Number.

2.2.9. The registration number must not be fixed on removable parts such as a bonnet.

2.2.10. After the closing of registration the organizers of the racing event must confirm the registration officially by announcing it in written in a notice-board for the purpose.

2.3. Starting sequence

2.3.1. The first start sequence of competitors is set under the guidance of a starting-point judge by drawing lots. Sequence of further attempts is set backward to the previous one.

2.4. Call time

2.4.1. Call time lasts two minutes. During this lapse of time, the starting-point judge must call the competitor by his name three times.

2.4.2. A competitor loses his rights to take part in the race if he does not appear with his model at call time.

2.4.3. When a competitor is called, the next competitor must be advised to be ready.

2.4.4. If a competitor does not appear at the starting point or refuses the current start then the call time of the next competitor is increased to 3 minutes.

2.5. Fuels and filling up the tanks

2.5.1. For models of category A/B, equipped with spark plug engines, only standard fuel without any additives is allowed.

The standard fuel must be a mixture of 80% methanol and 20% castor oil.

2.5.2. The standard fuel must be provided by the organizer of the racing event. In his invitation he must quote the price of the fuel or he must state that the fuel is provided free of charge.

2.5.3. Before each run competitors must go to the filling place with empty tanks. The judge must rinse the tank with standard fuel, and then let the competitors fill up the tank with the same fuel.

2.5.4. The injection of the fuel into the engine as an aid to starting is allowed only with the standard fuel. The filling of the pipette or syringe must be done by the judge of the fuel place.

2.5.5. The organizer is obliged to provide a container for collecting the fuel from the rinsing of tanks, its safe storing and destroying at the end of each starting day.

2.6. Preparation time

2.6.1. The preparation time for models with an internal combustion engine is 4 min, for classes with electric motors 2 min. running from the moment, when the model is fixed to the cable.

2.6.2. The starting-point judge must clearly and accurately show to the competitor the beginning of preparation time.

2.6.3. The competitor must be informed of the preparation time used every 30 seconds by acoustic or optical means.

2.7. Resumption of a race

2.7.1. If a model is damaged on the water during a race period, the race must not be resumed. The same rule is applied if the propeller or the model is hampered by a foreign body, water plants, bits or buoys, etc.

2.7.2. The resumption of a race is allowed only in the following cases:

- a) breaking of the cable or an imperfection of the pylon provided that the competitor is not responsible for it.
- b) breakdown of the stop-watches.

2.8. Interruption of a race

2.8.1. The interruption of a whole set of races may be decided by the chief judge.

2.8.2. The interruption of races at the starting point may be decided by the starting point judge.

2.8.3. If a racing event is interrupted for more than 60 min., all the races must be repeated by all competitors.

2.9. Marking and result publication

2.9.1. All the results of a racing event must be immediately conveyed to the starting point by acoustic or optical means. The verbal announcement must be made in one official language of NAVIGA, in addition to the local language. The verbal announcement must be considered provisional.

2.9.2. The results must be written on the result lists. When a racing event is over, the results must be checked and published as provisional by the secretary and by the starting-point judge.

2.9.3. Within an hour after the provisional results have been published, they must be confirmed as final and official, and published as such. No protests shall be admitted thereafter.

2.9.4. Competitors who have obtained no result with their models in a class are not classified. Their names must appear at the end of the result list in alphabetical order.

2.10. Checking of the models of the first three competitors during World and Continental championships and record establishment

2.10.1. During World and Continental Championships or at record scoring the first three placed models of each class must be checked for conformity to construction regulation and for the cubic capacity of engines.

2.10.2. The judges must measure the real cubic capacity of the combustion engine. The cubic capacity of the combustion engine must correspond to the class where the model belongs.

2.10.3. Combustion engines cubic capacity must be checked when the engine is cold.

2.10.4. If a speed record seems to be beaten, the model must not leave the starting-platform until the judge has checked the model.

2.10.5. The competitor has to show his model to the judges. He must do the preparatory work (for instance opening of the engine). If a competitor refuses to submit to the checking or does not do the preparatory work, he will be disqualified.

2.10.6. If the results of the measurement do not correspond to the instructions the model is disqualified. In that case, the following models to be checked move one step forward in the checking list.

2.11. Equipment of the competitors' park

The competitors' park must be settled in an enclosure with the necessary means to ensure the competitors' safety and quiet.

Each competitor must have at his disposal:

- ❖ One table and chair, which will be protected from direct sunlight or bad weather.
- ❖ Protected electric point (220V/10A)
- ❖ Drinking water bottles must be available.

Within 50 m around the competitors' enclosure: public conveniences and a wash-basin in conformity with European standards of hygiene must be accessible to competitors and accompanying persons.

2.12. In accordance with General NAVIGA Rules

The following items are determined in accordance with General NAVIGA Rules:

- Age limitation of juniors
- Place of races
- The starting area, the place of preparation and the access conditions
- Safety Conditions and Requirements concerning models with electric motors and batteries used in them
- Oaths of the competitors and judges
- Regulations of protests
- Conditions of setting up a record
- Attribution of titles during World and Continental Championships
- Distinctions awarded to the competitors and homage paid to the winners of the World and Continental Championships

3.0. SAFETY AND SECURITY MEASURES

Any fire, flame or incandescent product unrelated to the engine is strictly forbidden in the starting area (starting platform, judges' table and fuel supply) and near the electric appliances placed by the organizers and signaled conspicuously.

All the areas where competitors and spectators might stand around the racing circuits must be closed. Wire fences or safety nets able to stand the impact of the models shall be provided. Their height must be at least 2.10 m above water-level.

After launching the model the competitor and his assistants must immediately get out of the race area and stay behind the wire fences in the safety area.

The starting-point judge is entitled to dismiss competitors who do not respect the safety rules stated in the present Rules.

Annex 1

Making the cables of class A/B: 2 advisable possibilities

Figure 1a/ NAVIGA pattern

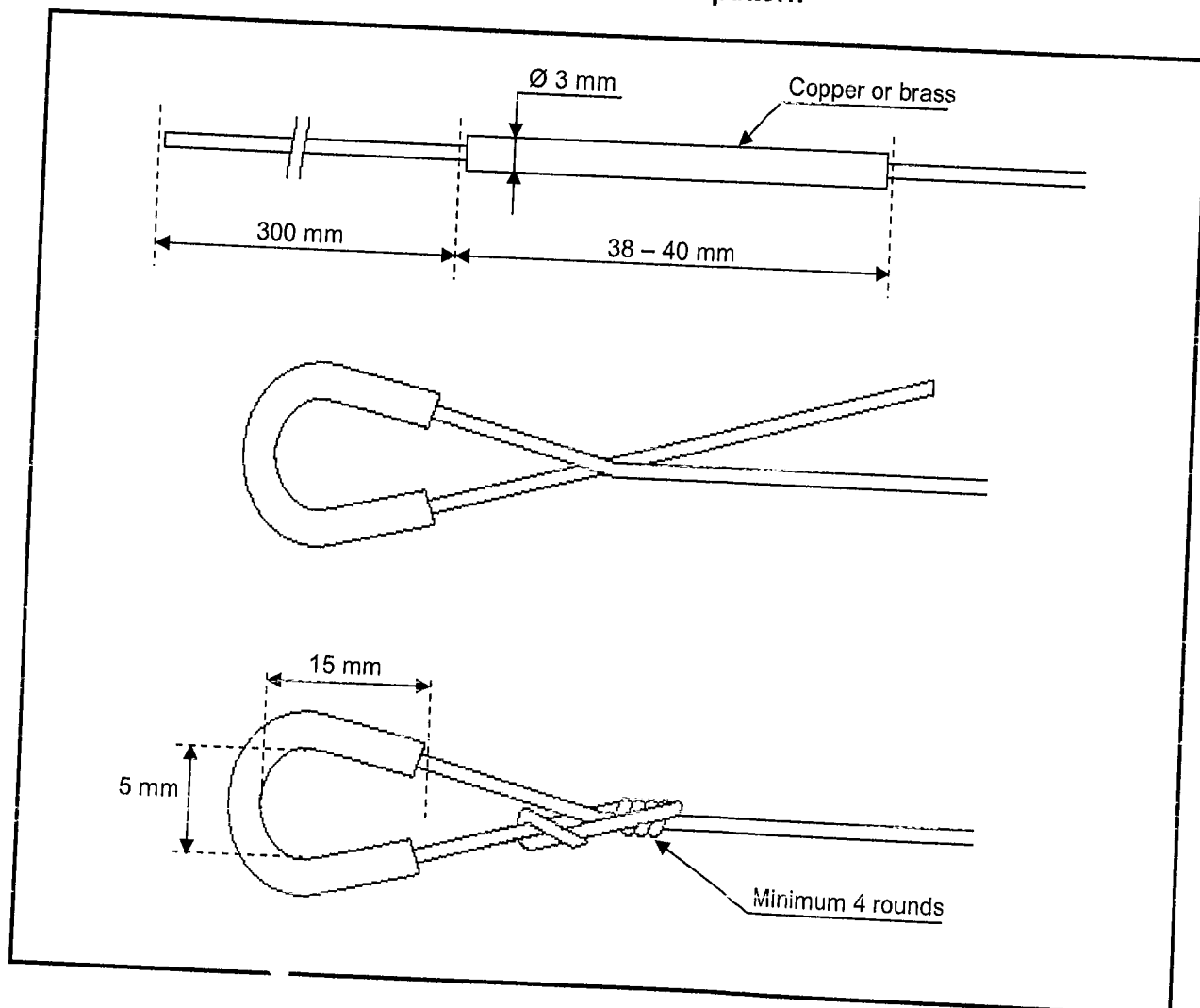


Figure 1b/ MPBA pattern

Reeling-up with a copper wire (tin welded) + non-welded reeling-up at the end of the cables in the shape of anti-breaking sheath.



N S

NAVIGA

World Organisation for Modelshipbuilding and Modelshipsport
Weltorganisation für Schiffsmodellbau und Schiffsmodelsport
Organisation Mondiale de Navimodelisme et de Sport Nautique

Sektion Navigation Scale (NS)
Hans-Jürgen Borchers, Hardeessemstraße 13 31177 Harsum
Deutschland



Harsum, den 5. Juli 2016

Bewertungsbogen Klasse F4b

Sehr geehrte Damen und Herren,
Ich möchte noch einmal darauf hinweisen das ab dem 1. Januar 2017 bei internationalen Wettbewerben das zusätzliche Bewertungsblatt Bestandteil des Messbriefes ist.
Die Erklärung steht im Regelwerk NS Version Seite 42 und 43.
Bitte ausfüllen und an den Messbrief heften.

Diese PDF Datei kann am PC ausgefüllt werden.

Zu finden auf der NAVIGA Homepage: www.naviga.org/rulebook/NS/
Beiblatt Bauwertung Original F4B 21.01.16 DE GB RU am PC ausfüllbar.pdf
Supplement evaluation F4B on PC for filling 21.01.16 DE GB RUS.pdf

Dear Sir or Madam,
I would like to point once again to it from the 1st of January, 2017 with international competitions the additional assessment sheet Component of the measurement letter.
The explanation stands in the set of rules version NS Page 42 and 43.
Please, fill and to the measuring letter fix.

This PDF file can be filled in the PC.

To find on the NAVIGA homepage: www.naviga.org/rulebook/NS/
Beiblatt Bauwertung Original F4B 21.01.16 DE GB RU am PC ausfüllbar.pdf
Supplement evaluation F4B on PC for filling 21.01.16 DE GB RUS.pdf

Глубокоуважаемые дамы и господа,
Я хотел бы указывать еще раз на это начиная с 1 января 2017 при международных соревнованиях дополнительный лист оценки Составная часть измерительного письма - это. Заявление стоит в регулирующем механизме версию NS Сторона 42 и 43.
Пожалуйста, соответствуют и к измерительному письму прикрепляют.

Этот файл PDF может заполняться на ПК.

Находить на сайте NAVIGA: www.naviga.org/rulebook/NS/
Beiblatt Bauwertung Original F4B 21.01.16 DE GB RU am PC ausfüllbar.pdf
Supplement evaluation F4B on PC for filling 21.01.16 DE GB RUS.pdf

mit freundlichen Grüßen / best regards

Hans-Jürgen Borchers
Sektionsleiter NS NAVIGA

Sektionsleiter NS Hans-Jürgen Borchers
Hardeessemstr. 13 31177 Harsum
Tel.: +49 5127 1523
eMail: borchershj@t-online.de

Baubewertungsformblatt Static Judging form F4b Лист оценки F4-b

Erbauer builder Автор модели

Vorname first name Имя	Nachname surname Фамилия	Dauerregistriernummer registration number регистрационный номер	Verein Club Клуб

Modell model Модель

Name Название	Typ Тип	Baukasten der Firma modular company Модельная фирма

Stempel Dachverband
stamp organization
Печать федерации

Materialien material Материалы

1.	Rumpf Hull Корпус	
2.	Deck deck Палуба	
3.	Aufbauten superstructures Надстройки	

nicht aus dem Baukasten verwendete Teile (Eigenanfertigung)
not used components from the box of building blocks (own manufacture) не из набора (собственного изготовления)

Nr.	Teile parts Детали	Material material Материал	Nr.	Teile parts Детали	Material material Материал
1			13		
2			14		
3			15		
4			16		
5			17		
6			18		
7			19		
8			20		
9			21		
10			22		
11			23		
12			24		

Zusätzlich angebrachte oder vom Baukasten abweichende Teile
In addition, attached or from the box of building blocks deviant parts
Детали использованные дополнительно или отличающиеся от наборных

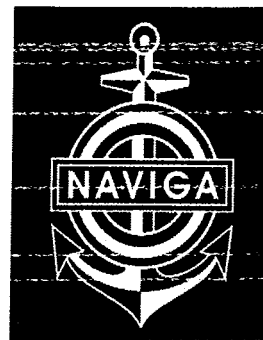
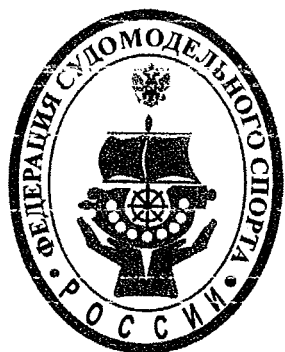
Nr.	Teile parts Детали	Material material Материал	Nr.	Teile parts Детали	Material material Материал
25			37		
26			38		
27			39		
28			40		
29			41		
30			42		
31			43		
32			44		
33			45		
34			46		
35			47		
36			48		

Datum
date
Дата

Unterschrift Erbauer
Signature builder
Подпись автора модели







Federation of Shipmodeling and Shipmodeling Sport of Russia

European Shipmodeling Championship In Section "NS"

**Gatchina (Saint Petersburg), Russia
09-14 August 2016**

Organizers:

- World Organization for Modelship Building and Modelship Sport NAVIGA
- Ministry of Sport of Russia
- Federation of Shipmodeling Sport of Russia
- Gatchina State Museum Preserve

**NAVIGA Official
Representative:**

Dieter Matysik, President of NAVIGA, Germany

Chief Judge:

Dmitriy Kalmykov, Vice-President of NAVIGA, Belarus

Chief Secretary:

Nikolay Samartsev, Russia

**Web-site of the
Championship:**

ec2016ns.fsmr.ru

Dates:

09 – 14 August 2016

Valid rules:

Rulebook section NS 01 2016 and Competition Rules 2 2016

**Age limit for young
people:**

1999 at the earliest, inclusive

**Permitted Number
of Participants:**

For all countries:
five people per country per class+ Champion of Europe 2014

Start Fee:

Seniors: EUR 20.0 per model
Juniors: EUR 10.0 per model

Banquet:

EUR 20.0 per person

Protest:	EUR 10.0 per protest
Official registration starts:	01 May 2016
Official registration finishes:	Applications are accepted up to the 30th of June 2016 (they can be sent by fax, e-mail or post);
Registration Terms:	<ul style="list-style-type: none"> • Applications for participation should be sent by a national association (federation) which is a current NAVIGA member; • Each national association (federation) should send its application for each sportsman and team in the appropriate form; • No individual applications are accepted. • Applications that have a signature and seal of the national association (federation) should be sent to the following address: e-mail: gv-0759@mail.ru, samartsev@yandex.ru (Excel and a PDF scan)
Payment Terms:	<ul style="list-style-type: none"> • National associations (federations) should pay all start fees via a bank transfer. • In order to register the fees should be paid before the 30th of July 2016.
Bank Details:	Federation of Shipmodeling Sport of Russia, INN 7733102616, KPP 773301001, Settlement Account 40703810705000000005, Correspondence Account 30101810945250000174, BIC 044525174, OJSC «RGS Bank», Moscow
Documents for Registration:	<ul style="list-style-type: none"> • Passport or any other type of ID document • Insurance covering all period of the Championship
Winners and Prizes:	Prize-winning sportsmen are awarded with medals and diplomas (top 3 places). Each participant receives a diploma of participation. Gold medalists in all classes receive a valuable gift.
National Flags and Anthems:	<p>At the registration each delegation should provide a national flag of its country (150 x 100 cm).</p> <p>After the closing ceremony the flags will be returned.</p>
Technical Check-up and Registration of Models:	<p>Team leaders submit documents for all their teams.</p> <p>At the registration of models participants must submit their radio control devices for an inspection.</p>
Used Frequencies:	27 MHz, 40 MHz, 2,4 GHz.
Channels:	<p>F2, F-DS: 27 MHz: channels: 9, 10, 12, 13, 19, 24 40 MHz: channels: 52, 55, 59, 85, 89, 2,4 GHz</p> <p>F4: 27 MHz: channels: 7, 15, 17, 18, 22, 30 40 MHz: channels: 50, 57, 81, 82, 91, 2,4 GHz</p> <p>F6, F7, NSS: 27 MHz: all channels: 40 MHz и 2,4 GHz.</p>
Registration:	Registration of models takes place on the 09 th of August 2016, from 10am 19-00pm
	Registration Venue: Gatchina Park
Accommodation for participants:	Ladoga Hotel (www.ladogahotel.ru) in Saint Petersburg. For the participants staying in a double room will cost RUR 1400 per person.

European Championship Programme

	Time	Event
09 August, Tuesday	10.00 – 19.00	Registration, official training
10 August, Wednesday	10.00 – 12.00	Start of F4A, evaluation of F2A
	12.00 – 13.00	Opening ceremony of the Championship
	14.00 – 16.00	Start of F2A, evaluation of F4B
	16.00 – 18.00	Start of F4B, evaluation of F2B
	18.00 – 19.00	Start of F6
11 August, Thursday	09.00 – 11.00	Start of F4A, evaluation of F2B, NSS-A
	11.00 – 13.00	Start of F2B, evaluation of F4C, NSS-B
	14.00 – 16.00	Start of F4C, evaluation of F2C, NSS-C
	16.00 – 18.00	Start of F2C, evaluation of F-DS, NSS-D
	18.00 – 19.00	Start of F7
12 August, Friday	09.00 – 11.00	Start F4A, F2-A NSS-A, evaluation of F2S
	11.00 – 13.00	Start of F4B, F2B, NSS-B
	14.00 – 16.00	Start of F4C, F2C, NSS-C
	16.00 – 18.00	Start of F-DS, F2S, NSS-D
	18.00 – 19.00	Start of F6
13 August, Saturday	09.00 – 11.00	Start of F4B, F2-A, NSS-A
	11.00 – 13.00	Start of F4C, F2B, NSS-B
	14.00 – 16.00	Start of F-DS, F2C, NSS-C
	16.00 – 18.00	Start of F2S, NSS-D
	18.00 – 19.00	Start of F7
13 августа, Saturday	09.00 – 11.00	Start of F-DS, NSS-A
	11.00 – 13.00	Start of F2S, NSS-B
	13.00 – 15.00	NSS-C, NSS-D
	17.00	Closing ceremony of the Championship

- During the Championship the participants can take part in excursions around the Museum Preserve in the days free from competitions in their Class.

IX. Evropský pohár F-NSS 2015 Kristýna, Hrádek nad Nisou, CZ

Za ideálního počasí (slunečno a stabilní vítr) proběhly soutěže plachetnic Naviga F-NSS, kategorií NSS-A, NSS-B a NSS-D. Třídenní soutěže se účastnily modely lodí ze čtyř států, proběhly dvě plné regaty dle pravidel F-NSS 2016, Zlatá plachta Kristýny a Pohár Trojzemí. Výsledky těchto dvou regat byly započítány do hlavní soutěže o IX. Evropský pohár. Rušný víkend zakončila dopolední putovní Regata Modrá stuha na tři kola ke vzdálenému majáku. Technická zajímavost – v blízkosti soutěžních tratí byla zakotvena bóje „izolované nebezpečí“ na které byl ve výšce 1m nad hladinou umístěn anemometr s bezdrátovým přenosem rychlosti větru na místo rozhodčích. Toto měření je více vypovídající než klasický ruční anemometr umístěný na břehu.

Soutěže jsou velmi sledovány veřejností, která má volný přístup. Každý rok sílí zájem médií (noviny a TV zpravodajství). Akce je pořádána se záštitou hejtmána Libereckého kraje a patronací starosty města Hrádku nad Nisou. Soutěže využívají zázemí příjemného autokempu a restaurace s halou pro uložení modelů. I díky tomu, se akce v místě konala již posedmé.

Za pořadatele Jiří Kreisel

IX. European Challenge Cup 2016 F-NSS on the lake Kristyna, Hradek nad Nisou, Czech Republic

Under ideal weather conditions (sunny and stable wind) there were held the sailboat competition class Naviga F-NSS, categories NSS-A, NSS-B and NSS-D. At the three-day long competition there participated 40 ship models from four countries. Two full regattas were held under the rules Naviga F-NSS, the Golden Cup of Kristyna and the Tri-Nation Cup. The results of these two regattas were included in the main competition of the IX. European Cup. Eventful weekend was finished by the Sunday-morning touring Regatta Blue Ribbon on five rounds around the traditional scale-lighthouse. For more details see the score sheet.

Technical news - near the competition course was anchored a buoy "isolated danger". On the buoy at the height of one meter above the water there was located an anemometer. The accurate wind speed and also the wind direction were wireless transmitted to a place for judges. This measurement is more meaningful than a typical handheld anemometer located on the shore.

Competitions are always very interesting for public, who has free access. Each year there is an increasing interest of media (newspapers and TV news). The event is organized under the patronage of the Governor of the Liberec Region and the patronage of the Mayor of Hradec nad Nisou. The event uses facilities of a pleasant campground and restaurant with lounge for storing models. Thanks to that, the event had been held at this site for the seventh time.

On behalf of the organizers Jiri Kreisel





Výsledková listina
mezinárodní regaty
SCORE SHEET



IX. EVROPSKÝ POHÁR NAVIGA F - NSS 2016

IX. NAVIGA EUROPEAN CHALLENGE CUP - NSS 2016

"ZLATÁ PLACHTA KRISTÝNY"

GOLDEN SAIL OF KRISTINA LAKE

"POHÁR TROJZEMÍ"

NAVIGA TRI - NATIONS CUP

"REGATA MODRÁ STUHA"

BLUE RIBBON OF KRISTINA LAKE

Číslo soutěže:

Vyhlašovatel:

Pořadatel:

Místo konání:

Termín konání:

Lo-01

Svaz modelářů České republiky

Klub lodních modelářů "ADMIRÁL" Jablonec nad Nisou

Rekreační areál KRISTÝNA, Hrádek nad Nisou

5.05. - 8. 05. 2016

Hlavní pořadatel/ Main Organizer:

Sekretář závodu/ Secretary:

Hlavní rozhodčí/ Main Judge:

Vedoucí startoviště/ Start Controller NSS-A:

Vedoucí startoviště/ Start Controller NSS-B/C:

Vedoucí startoviště/ Start Controller NSS-A jun./D:

Rozhodčí/ Judges:

Jiří KREISEL

Ladislav HANUŠKA

Marian TABOREK

Petr LUKEŠ

Michał DARANOWSKI

Zdeněk TOMÁŠEK st.

Stanislav Jakeš

Jan Červíček

Petr Lukeš

Vladimír Bláha

Otakar Holan

Michał Daranowski

Vladimír Dudník

Hana Jakubíková

Irena Rosenbergová

Martina Šenekelová

ADMIRAL Jablonec nad Nisou, Minisail.cz

CZ-25/B

PL-22/A/OS

04/NS

PL-35/A

CZ-02/A/OS

46/NS

13/NS

04/NS

42/NS

CZ-11/B

PL-35/A

RU

47/NS

53/NS

19/NS

Vedoucí hodnotící komise NSS-A/B/C/D:

Head of evaluation committee:

Členové komise/ Members of evaluation committee:

Marian Taborek

Vladimír Dudník

Michał Daranowski

Otakar Holan

Zdeněk TOMÁŠEK st.

PL-22/A/OS

RU-17/A/OS

PL-35/A

CZ11/B

CZ-02/A/OS

Technický vedoucí/ Technical Director:

Technické zabezpečení/ Technical servis:

Milan KROUPA

Michal Šenekel

Klub lodních modelářů "ADMIRÁL" Jablonec nad Nisou

ADMIRÁL Jablonec nad Nisou

18/NS

Během závodu nebyl podán žádný protest.

Počasí:

Pátek: jasno, teplota vzduchu 20°C, rychlost větru 0,0 - 6,0 m/s,

Sobota: skoro jasno, teplota vzduchu 17° - 22°C, rychlost větru 3 - 6 m/s,

Neděle: jasno, teplota vzduchu 17°C, rychlost větru 0 - 4 m/s,

Pořadatel děkuje všem účastníkům za sportovní chování a předvedené výkony.

Pořadatel děkuje všem sponzorům, kteří přispěli ke zdárnému průběhu soutěže.



V Hrádku nad Nisou dne 8.5.2016

Hlavní rozhodčí:

Marian Taborek

Hlavní pořadatel:

Jiří Kreisel

Stavební zkouška/ Static Evaluation
NSS-A Jun.

Placing	Competitor					MODEL										Static Evaluation:				
	Surname	Name	Club	Country	Number of licence	Name	Scale	Water Line Length [mm]	Sail Area [m2]	Displacement [kg]	Linear Rating R	Logarithmic Rating Rlog	Static Evaluation [points]	1	2	3	4	5	Static Evaluation [points]	
1	Jakeš	Tomaš (jun.)	KLOM Fregata, Bakov n. J.	CZ	CZE 316-017	Amati	1:9.5	1 030	0.513	9,250	0.771	0.820	83,500	84	84	78	84	83	83,50	
2	Kovalev	Aleksandr (jun)	Roslavl	RU		Assa Ak'oy	1:20	960	0.310	5,400	0.668	0.770	79,000	75	78	80	80	78	79,00	
3	Kudriavtsev	Andrei (jun)	FSS Smolensk	RU	RUS 211	Assa Ak'oy	1:20	943	0.320	4,550	0.706	0.760	78,500	78	79	78	79	79	78,50	
4	Maroim	Sofia (jun.)	FSS Smolensk	RU	RUS 211	Winston	1:20	943	0.320	4,550	0.706	0.760	77,500	77	78	78	77	78	77,50	
5	Alemtikov	Nikita (jun)	Roslavl	RU		USB	1:20	910	0.310	4,600	0.668	0.770	72,580	76	75	70	70	73	72,58	
6	Matushin	Ivan (jun.)	Roslavl	RU		Ilbruck	1:20	910	0.310	4,595	0.668	0.770	70,000	75	75	70	70	73	70,00	
7	Bažant	Tibor (jun.)	KLM Admirál Jablonec n. N.	CZ	CZE 131-092	Ocean	0	985	0.520	3,570	1.019	1.020	52,920	55	54	50	52	53	52,92	

NSS-A Sen.

NSS-A Sen.

Placing	Competitor				MODEL										Static Evaluation				
	Surname	Name	Club	Country	Number of licence	Name	Scale	Water Line Length [mm]	Sail Area [m2]	Displacement [kg]	Linear Rating R	Logarithmic Rating Rlog	Static Evaluation [points]						
1	Emler	Vratislav	KLM Admirál Jablonec n. N.	CZ	CZE 131-026	Vamante	1:16.5	1 000	0.668	14,700	0.732	0.800	94,750						
2	Kroupa	Milan	KLM Admirál Jablonec n. N.	CZ	131-011	Endeavour	1:24.6	1 045	1.036	11,300	1.039	1.040	91,250						
3	Špinar	Jiří	KLoM Trebechovice p. O.	CZ	CZE 403-002	Endeavour	1:29	920	0.700	3,800	0.818	0.850	90,420						
4	Slížek	Josef	KLoM Nautilus Probošov	CZ	CZE 028-003	Solway Maid	1:13	932	0.690	9,040	0.815	0.850	90,080						
5	Mráčková	Lenka	KLM Delta Pardubice	CZ	CZE 163-033	Lenka	1:10	958	0.521	11,300	0.676	0.770	88,750						
6	Šimůnek	Karel	KLoM Fregata, Bakov n. J.	CZ	CZE 316-010	Endeavour	1:24.65	1 032	1.070	11,000	1.053	1.050	88,500						
7	Halarna	Libor	KLM Admirál Jablonec n. N.	CZ		Pirate II	1:10	1 000	0.760	9,200	0.912	0.920	85,580						
8	Kmiecik	Jan	HMKZ Blachownia	PL	POL-642	Lacho Drom	1:9	930	0.470	9,100	0.670	0.770	85,080						
9	Basir	Aleksander	FSS Smolensk	RU	RUS-211	Team News Corp.	1:20	943	0.320	4,550	0.706	0.780	84,830						
10	Basina	Raisa	FSS Smolensk	RU	RUS-204	Team News Corp.	1:20	943	0.320	4,550	0.706	0.780	84,830						
11	Stala	Marek	HMKZ Blachownia	PL	POL 814	Stormy Weather	1:12	990	0.800	13,000	0.826	0.850	83,420						
12	Valenta	René	KLoM Slezsko	CZ	CZE 336-005	Barracuda	1:10	1 050	0.533	9,000	0.808	0.840	77,080						
13	Janoš	Milan	KLoM Brandýs nad Labem	CZ	CZE 079-057	Vlava	1:10	805	0.414	5,060	0.662	0.770	75,500						
14	Chmelka	František	KLoM Slezsko	CZ	CZE 336-003	Trigger	1:12	1 050	0.525	8,500	0.818	0.850	74,750						

Placing	Competitor				MODEL										Static Evaluation				
	Surname	Name	Club	Country	Number of licence	Name	Scale	Water Line Length [mm]	Sail Area [m2]	Displacement [kg]	Linear Rating R	Logarithmical Rating Rlog	Static Evaluation [points]	1 [points]	2 [points]	3 [points]	4 [points]	5 [points]	Static Evaluation [points]
1	Serekel	Michal	KLM Admiral Jablonec n. N.	CZ	CZE 131-040	Marquitta	1:18,7	1 215	1,742	15,300	1,417	1,270	94,830	96	94	92	96	95	94,83
2	Mrakota	Josef	KLM Delta Pardubice	CZ	CZE 166-027	Jolie Brise	1:14	1 050	1,179	17,540	0,962	0,960	94,250	95	93	93	98	95	94,25
3	Silžek	Josef	KLoM Nautilus Probošov	CZ	CZE 026-006	When and If	1:15,5	948	0,783	11,200	0,822	0,850	94,170	97	93	93	95	95	94,17
4	Fmler	Vratislav	KLM Admiral Jablonec n. N.	CZ	CZE 131-026	Thalassa	1:15	860	0,695	11,400	0,699	0,780	93,500	92	95	93	94	94	93,50
5	Kozák	Peter	KLoM Bojnice	SK	SVK 106-007	Mistral	1:16	1 010	0,870	10,300	0,950	0,950	91,420	93	93	89	90	91	91,42
6	Eašek	Petr	KLM Admiral Jablonec n. N.	CZ	CZE 131-037	Lizzie May	1:12	885	0,760	13,000	0,720	0,790	90,750	91	96	88	90	91	90,75
7	Huk	Wojciech	HMKZ Blachownia	PL	POL-840	Viola	1:12	840	0,660	9,050	0,718	0,790	90,580	91	90	92	90	91	90,58
8	Kolaczek	Marek	HMKZ 39r Blachownia	PL	POL-930	Runa IV	1:10	830	0,740	9,300	0,745	0,800	89,420	89	90	88	90	89	89,42
9	Dudnik	Vladimir	Roslavl	RU		Amelia	1:17	870	0,570	8,800	0,698	0,780	89,250	90	89	90	86	89	89,25
10	Kincl	Antonin	KLoM Slezsko	CZ	CZE 336-009	Runa IV	1:6,5	910	1,056	12,100	0,893	0,900	84,750	85	81	85	86	84	84,75
11	Kopecký	Zdeněk	KLM Bílá Třemešná	CZ	CZE 101-001	Dorian Gray	1:15	890	0,980	13,350	0,814	0,840	83,330	85	80	85	82	83	83,33
12	Mrázek	Pavel	KLoM Kolín	CZ	CZE 140-044	Dorian Gray	1:15	890	1,200	13,100	0,907	0,910	82,500	80	80	85	85	83	82,50
13	Zeman	Jaroslav	KLoM Nautilus Probošov	CZ	CZE 028-010	Brilliant	1:15	996	0,724	19,800	0,687	0,780	81,000	80	82	80	82	81	81,00
14	Dvořák	Milan	KLoM Kolín	CZ	CZE 140-045	Dorian Gray	1:15	910	1,285	11,210	1,011	1,010	80,920	81	78	83	81	81	80,92
15	Přezbta	Dariusz	MKS Gwarek	PL	PL 836	Sun Fish	1:4	1 000	0,450	5,000	0,860	0,880	65,080	66	66	65	60	64	65,08
16	Křelise	Jiří	KLM Admiral Jablonec n. N.	CZ	CZE 131-041	Colin Archer	1:15	830	0,540	11,200	0,598	0,750	0,000	0	0	0	0	0	0,00
16	Lukeš	Jakub (jun.)	KLoM Nautilus Probošov	CZ	CZE 028-0xx	Betty CK 45	1:9	990	0,684	15,400	0,722	0,790	0,000	0	0	0	0	0	0,00

NSS-D

Placing	Competitor						MODEL										Static Evaluation				
	Surname	Name	Club	Country	Number of licence	Name	Scale	Water Line Length [mm]	Sail Area [m2]	Displacement [kg]	Linear Rating R	Logarithmical Rating Rlog	Static Evaluation [points]	1	2	3	4	5	Static Evaluation [points]		
														[points]	[points]	[points]	[points]	[points]	[points]		
1	Culek	Jindřich	KLoM Brandýs nad Labem	CZ	CZE 079-012	Dragon Fly 1200	1:10	1,220	0,705	7,995	1,123	1,110	78,750	75	80	80	78	78	78,75		
2	Dčuša	Ladislav	KLoM Brandýs nad Labem	CZE 079-011	0	Volans	1:30	950	0,330	2,180	0,923	0,930	51,170	59	50	50	51	53	51,17		
3	Bukiewicz	Piotr	SpecModel Braniewo	POL-822		Volans	1:30	950	0,332	2,600	0,873	0,890	50,580	52	50	50	51	51	50,58		

List of referees:

- 1 Otakar Holan
- 2 Vladimír Dudnik
- 3 Michal Daranowski
- 4 Marian Taborek
- 5 Zdeněk Tomášek st.

Lo - 01 Zlatá plachta "Kristýny" 2016/ Golden Sail of Kristýna Lake 2016
NSS-B

Placing	Competitor				MODEL		
	Surname	Name	Club	Country	Name	Logarithmical Rating Rtg	Static Evaluation (points)
1	Dudník	Vladimír	Roslavi	RU	Amelia	0,780	89,250
2	Slížek	Josef	KLoM Nautilus Proboštov	CZE 028-008	When and If	0,850	94,170
3	Huk	Wojciech	HMKZ Blachownia	PL	Viola	0,790	90,580
4	Šenekel	Michal	KLM Admiral Jabloniec n. N.	CZ	Marquita	1,270	94,830
5	Kolacznyk	Marek	HMKZ 39f Blachownia	PL	Runa IV	0,800	89,420
6	Mrákta	Josef	KLM Delta Pardubice	CZE 168-027	Jolia Brise	0,960	94,250
7	Emier	Vratislav	KLM Admiral Jabloniec n. N.	CZE 131-026	Thalassa	0,780	93,500
8	Kozák	Peter	KLoM Bojnice	SVK 108-007	Mistral	0,850	91,420
9	Dvořák	Milan	KLoM Kolín	CZE 140-045	Dorian Gray	1,010	80,920
10	Kindel	Antonín	KLoM Slezsko	CZE 338-009	Runa IV	0,900	84,750
11	Mrázek	Pavel	KLoM Kolín	CZE 140-044	Dorian Gray	0,910	82,500
12	Zeman	Jaroslav	KLoM Nautilus Proboštov	CZE 028-010	Brilliant	0,780	81,000
13	Kupectý	Zdeněk	KLM Bílá Třemešná	CZE 101-001	Dorian Gray	0,910	83,330
14	Pieczka	Dariusz	MKS Gwarek	PL 836	Sun Fish	0,980	65,080
15	Básek	Peir	KLM Admiral Jabloniec n. N.	CZE 131-007	Lizzie May	0,790	90,750
16	Krašel	Jiří	KLM Admiral Jabloniec n. N.	CZE 131-041	Colin Archer	0,750	0,000
16	Luteš	Jakub (jun.)	KLoM Nautilus Proboštov	CZE 028-0xx	Betty CK 45	0,790	0,000

NSS-D

Placing	Competitor				MODEL		
	Surname	Name	Club	Country	Name	Logarithmical Rating Rtg	Static Evaluation (points)
1	Culek	Jindřich	KLoM Brandýs nad Labem	CZE 079-012	Dragon Fly 1200	1,110	78,750
2	Burkiewicz	Piotr	SpecModel Branišovo	POL-822	Volans	0,810	50,580
3	Douša	Ladislav	KLoM Brandýs nad Labem	CZE 079-011	Volans	0,930	51,170

Acquired Time HEAT1 sec.	Evaluation Time		Points P1	Acquired Time HEAT2 sec.	Evaluation Time		Points P2	Acquired Time HEAT2 sec.	Evaluation Time		Points P3	Clearing Points		Total valuation TP points
	Tz [s]	Tz1			Tz [s]	Tz2			Tz [s]	Tz3		CP		
2 316	1 806,5	50,00	1 560	1 216,8	49,77	1 686	1 315,1	43,94	99,77	189,02				
2 205	1 874,3	48,15	1 654	1 405,9	43,08	1 712	1 455,2	39,71	91,27	185,44				
2 485	1 963,2	46,01	1 757	1 388,0	43,63	1 521	1 201,6	48,05	94,10	184,68				
1 816	2 306,3	39,16	1 336	1 686,7	35,69	910	1 155,7	50,00	89,16	183,99				
2 568	2 054,4	43,97	1 514	1 211,2	50,00	1 683	1 354,4	42,66	93,97	183,39				
2 238	2 148,5	42,04	1 556	1 493,8	40,54	1 645	1 579,2	36,59	82,58	176,83				
2 817	2 197,3	41,11	2 009	1 567,0	38,65	2 132	1 663,0	34,75	79,76	173,26				
2 365	2 246,8	40,20	1 872	1 778,4	34,05	1 669	1 585,3	36,44	76,64	168,06				
2 399	2 423,0	37,28	1 605	1 621,1	37,36	1 194	1 205,9	47,92	85,28	166,20				
0	0,00	0,00	2 290	2 981,0	29,38	1 809	1 628,1	35,49	64,87	149,62				
2 777	2 527,1	35,74	0	0,00	0,00	2 162	1 967,4	29,37	65,11	147,61				
3 251	2 535,8	35,62	0	0,00	0,00	2 405	1 875,9	30,80	66,42	147,42				
0	0,00	0,00	2 405	2 020,2	29,98	2 361	1 983,2	29,14	59,12	142,45				
3 169	2 788,7	32,39	2 459	2 63,9	27,99	2 260	1 988,8	29,06	61,45	126,53				
0	0,00	0,00	0	0,00	0,00	2 605	2 058,0	28,08	28,08	118,83				
0	0,00	0,00	0	0,00	0,00	0	0,00	0,00	0,00	0,00				
0	0,00	0,00	0	0,00	0,00	0	0,00	0,00	0,00	0,00				

Acquired Time HEAT1 sec.	Evaluation Time		Points P1	Acquired Time HEAT2 sec.	Evaluation Time		Points P2	Acquired Time HEAT3 sec.	Evaluation Time		Points P3	Clearing Points		Total valuation TP points
	Tz [s]	Tz1			Tz [s]	Tz3			Tz [s]	Tz3		CP	TP	
1 707	1 894,8	50,00	1 705	1 832,6	50,00	1 265	1 404,2	50,00	100,00	176,75				
2 500	2 225,0	42,58	2 439	2 170,7	43,59	0	0,00	0,00	86,17	196,75				
0		0,00	0		0,00	0	0,00	0,00	0,00	51,17				

POHÁR TROJZEMÍ NSS NAVIGA 2016/ NAVIGA TRI - NATIONS CUP NSS 2013
NSS-A Jun.

Placing	Competitor				MODEL	
	Surname	Name	Club	Country	Logarithmic Rating Rlog	Static Evaluation [points]
1	Kudrjavtsev	Andrei (jun)	FSS Smolensk	RUS 211	0.780	72.500
2	Jakeš	Tomaš (jun.)	KLM Fregata, Bakov n. J.	CZE 316-017	0.820	63.500
3	Klanoim	Sofia (jun.)	FSS Smolensk	RUS 211	0.780	77.500
4	Alemtikov	Nikita (jun)	Roslavl	RU	0.770	72.580
5	Matiusihin	Ivan (jun.)	Roslavl	RU	0.770	70.000
6	Kovaliev	Aleksandr (jun)	Roslavl	RU	0.770	79.000
7	Sažant:	Tibor (jun.)	KLM Admiral Jablonec n. N.	CZE 131-092	1.020	52.920

NSS-A Sen.

Placing	Competitor				MODEL	
	Surname	Name	Club	Country	Logarithmic Rating Rlog	Static Evaluation [points]
1	Bušina	Ralša	FSS Smolensk	RUS-204	0.780	81.830
2	Mrákotová	Lenka	KLM Delta Pardubice	CZE 168-036	0.770	88.750
3	Basin	Aleksander	FSS Smolensk	RUS-211	0.780	81.830
4	Slížek	Josef	KLM Nautilus Proboškov	CZE 028-008	0.850	90.080
5	Kroupa	Milan	KLM Admiral Jablonec n. N.	131-011	1.040	97.250
6	Helama	Libor	KLM Admiral Jablonec n. N.	CZ	0.920	85.380
7	Kniecick	Jan	HMKZ Blachownia	POL-842	0.770	85.080
8	Špinar	Jiří	KLM Tělechovice p. O.	CZE 403-002	0.850	90.420
9	Střila	Marek	HMKZ Blachownia	POL 814	0.850	83.420
10	Janeš	Milan	KLM Brandýs nad Labem	CZE 079-057	0.770	75.500
11	Wlclarta	Rene	KLM Slezsko	CZE 335-005	0.840	77.080
12	Štůněk	Karel	KLM Fregata, Bakov n. J.	CZE 316-010	1.050	88.500
13	Errier	Vratislav	KLM Admiral Jablonec n. N.	CZE 131-025	0.800	94.750
14	Chmelka	František	KLM Slezsko	CZE 336-003	0.850	74.750

Acquired Time	Evaluation Time			Points	Acquired Time	Evaluation Time			Points	Acquired Time	Evaluation Time			Points	Clearing Points	Total valuation
HEAT1	Tz [s]	P1	HEAT2	Tz [s]	P2	HEAT3	Tz [s]	P3	Points	CP	TP	P3	Tz [s]	Points	CP	TP
sec.	Tz1		sec.	Tz3		sec.	Tz3				points		Tz3			points
1 316	1 026.5	50.00	1 291	1 007.0	50.00	1 480	1 154.4	50.00	100.00	175.50						
1 330	1 090.6	47.06	1 340	1 098.8	45.02	1 813	1 486.7	38.83	92.88	176.38						
2 040	1 591.2	32.25	1 337	1 042.9	48.28	1 670	1 302.6	44.31	92.59	170.09						
2 252	1 734.0	29.60	1 655	1 274.4	39.51	2 619	2 016.6	28.62	69.11	141.69						
2 080	1 601.6	32.05	1 796	1 382.9	36.41	0		0.00	68.46	138.46						
2 898	2 231.5	23.00	C		0.00	0		0.00	23.00	102.00						
2 044	2 084.9	24.62	C		0.00	0		0.00	24.62	77.54						

Acquired Time	HEAT1	sec.	Evaluation Time	Tz [s]	P1	Points	Acquired Time	HEAT2	sec.	Evaluation Time	Tz [s]	P2	Points	Acquired Time	HEAT3	sec.	Evaluation Time	Tz [s]	P3	Points	Clearing Points	CP	Total valuation	TP	points
1 583	1 234.7	50.00	1 073	836.9	50.00	50.00	1 874	1 461.7	50.00	100.00	184.83														
2 556	1 968.1	31.37	1 335	1 028.0	40.71	2 334	1 797.2	40.67	81.38	170.13															
2 526	1 970.3	31.33	1 282	1 000.0	41.83	2 350	1 833.0	39.87	81.72	166.55															
2 192	1 863.2	33.13	1 271	1 080.4	38.73	2 408	2 046.8	35.71	74.44	164.32															
1 749	1 819.0	33.94	1 151	1 197.0	34.96	2 890	3 005.6	24.32	68.90	160.15															
1 842	1 694.6	36.43	1 310	1 205.2	34.72	3 660	3 367.2	21.71	71.15	156.73															
2 587	1 992.0	30.99	1 575	1 212.8	34.51	2 845	2 190.7	33.36	67.87	152.95															
2 265	1 925.3	32.07	1 814	1 541.9	27.14	3 162	2 687.7	27.19	59.26	149.68															
2 509	2 132.7	28.95	1 427	1 213.0	34.50	0	0.00	63.45	146.87																
2 556	1 968.1	31.37	1 437	1 106.5	37.87	3 747	2 885.2	25.33	69.19	144.69															
2 652	2 227.7	27.71	1 350	1 134.0	36.90	0	0.00	64.61	141.69																
2 244	2 356.2	26.20	1 495	1 569.8	26.60	0	0.00	52.86	141.36																
2 060	1 648.0	37.46	0	0.00	0.00	0	0.00	37.46	132.21																
2 493	2 119.1	29.13	2 015	1 712.8	24.42	0	0.00	53.56	128.31																

POHAR TROJZEMÍ NSS NAVIGA 2016/ NAVIGA TRI - NATIONS CUP NSS 2016
NSS-B

Placing	Competitor				MODEL	
	Surname	Name	Club	Country	Name	Logarithmical Rating Rlog
1	Koleczyk	Marek	HMKZ 33r Blachownia	POL-990	Runa IV	0,800
2	Cudnik	Vladimir	Roslavl	RU	Amelia	0,780
3	Wrańska	Josef	KLM Delta Pardubice	CZE 168-027	Jolie Brise	0,960
4	Huk	Wojciech	HMKZ Blachownia	POL-880	Viola	0,790
5	Slížek	Josef	KLoM Nautilus Probošlov	CZE 028-038	When and If	0,950
6	Šanekel	Michal	KLM Admiral Jablonec n. N.	CZE 131-040	Marquitta	1,270
7	Emier	Vratislav	KLM Admiral Jablonec n. N.	CZE 131-026	Thalassa	0,780
8	Zeman	Jaroslav	KLoM Nautilus Probošlov	CZE 028-010	Brilliant	0,780
9	Dvořák	Milan	KLoM Kolín	CZE 140-045	Dorian Gray	1,010
10	Bušek	Petr	KLM Admiral Jablonec n. N.	CZE 131-037	Lizzie May	0,790
11	Kincl	Antonín	KLoM Slezsko	CZE 336-009	Runa IV	0,900
12	Mrázek	Pavel	KLoM Kolín	CZE 140-044	Dorian Gray	0,910
13	Plečka	Daniusz	MKS Gwarek	PL 836	Sun Fish	0,880
14	Kozák	Peter	KLoM Bojnice	SVK 108-007	Mistral	0,950
15	Krepecký	Zdeněk	KLM Bílá Třemešná	CZE 101-001	Dorian Gray	0,840
16	Kretsel	Jiří	KLM Admiral Jablonec n. N.	CZE 131-041	Colin Archer	0,750
16	Lukeš	Jakub (jun.)	KLoM Nautilus Probošlov	CZE 028-0xx	Betty OK 45	0,790

NSS-D

Placing	Competitor				MODEL	
	Surname	Name	Club	Country	Name	Logarithmical Rating Rlog
1	Curek	Jindřich	KLoM Brandýs nad Labem	CZE 079-012	Dragon Fly 1200	1,110
2	Buckiewicz	Piotr	SpecModel Braniewo	POL-822	Volans	0,890
3	Dorša	Ladislav	KLoM Brandýs nad Labem	CZE 079-011	Volans	0,930

Acquired Time	HEAT1	sec.	Evaluation Time	Tz [s]	P1	Points	Acquired Time	HEAT2	sec.	Evaluation Time	Tz [s]	P2	Points	Acquired Time	HEAT3	sec.	Evaluation Time	Tz [s]	P3	Points	Cleaving Points	CP	Total valuation	TP	points
1 866			1 492,8	1 765	50,00	1 412,0	46,8	1 753	1 402,4	50,00	100,00	189,42													
1 989			1 551,4	1 672	48,11	1 304,2	50,10	1 957	1 526,5	45,94	98,11	187,36													
1 767			1 686,3	1 605	44,00	1 540,8	42,32	1 550	1 488,0	47,12	91,12	185,37													
2 173			1 716,7	1 775	43,48	1 402,3	46,50	1 885	1 489,2	47,09	93,59	184,17													
1 994			1 694,9	1 985	44,04	1 687,3	38,65	1 847	1 570,0	44,66	88,70	182,87													
1 425			1 803,8	1 300	41,24	1 651,0	39,50	1 511	1 919,0	36,54	80,74	175,57													
2 520			1 965,6	2 117	37,97	1 651,3	39,49	0		0,00	77,46	170,96													
3 370			2 628,6	2 124	28,40	1 656,7	39,36	1 929	1 504,6	46,60	85,96	166,96													
2 006			2 026,1	1 609	36,84	1 625,1	40,13	2 970	2 999,7	23,38	76,97	157,89													
0				2 741	0,00	2 165,4	30,11	2 734	2 159,9	32,47	62,58	153,33													
3 378			3 040,2	1 925	24,55	1 732,5	37,64	2 619	2 357,1	29,75	67,39	152,14													
2 378			2 164,0	2 650	34,49	2 411,5	27,04	2 447	2 226,8	31,49	65,98	148,48													
2 389			2 102,3	2 099	35,50	1 847,1	35,30	1 858	1 635,0	42,89	78,39	143,47													
2 208			2 097,6	0	35,58		0,00	0		0,00	35,58	127,00													
0				0	0,00		0,00	0		0,00	0,00	83,33													
0				0	0,00		0,00	0		0,00	0,00	0,00													
0				0	0,00		0,00	0		0,00	0,00	0,00													

Acquired Time	HEAT1	sec.	Evaluation Time	Tz [s]	P1	Points	Acquired Time	HEAT2	sec.	Evaluation Time	Tz [s]	P2	Points	Acquired Time	HEAT3	sec.	Evaluation Time	Tz [s]	P3	Points	Cleaving Points	CP	Total valuation	TP	points
3 545			3 935,0	2 993	23,18	3 322,2	31,50	1 696	1 882,6	43,61	75,11	153,86													
2 050			1 824,5	2 352	50,00	2 093,3	50,00	1 845	1 642,1	50,00	100,00	150,58													
2 646			2 460,8	0	37,07		0,00	0		0,00	37,07	88,24													

NSS-A Jun.

Placing	Competitor					MODEL							
	Surname	Name	Club	Country	Number of licence	Name	Scale	Water Line Length [mm]	Sail Area [m2]	Displacement [kg]	Linear Rating R	Logarithmical Rating Rlog	Static Evaluation [points]
1	Kudriavtsev	Andrei (jun.)	FSS Smolensk	RU	RUS 211	Assa Abloy	1:20	943	0,320	4,550	0,706	0,780	78,500
2	Jakoš	Tomáš (jun.)	KLoM Fregata, Bašov n. J.	CZ	CZE 316-017	Anati	1:9,5	1030	0,513	9,250	0,771	0,820	83,500
3	Maroim	Sofia (jun.)	FSS Smolensk	RU	RUS 211	Winston	1:20	943	0,320	4,550	0,706	0,780	77,500
4	Matushin	Ivan (jun.)	Roslavl	RU		Illbruck	1:20	910	0,310	4,595	0,668	0,770	70,000
5	Alelnikov	Nikita (jun.)	Roslavl	RU		USB	1:20	910	0,310	4,600	0,668	0,770	72,580
6	Kovalev	Aleksandr (jun.)	Roslavl	RU		Assa Abloy	1:20	960	0,310	5,400	0,668	0,770	79,000
7	Bažant	Tibor (jun.)	KLM Admirál Jablonec n. N.	CZ	CZE 131-092	Ocean	0	985	0,520	3,570	1,019	1,020	52,920

NSS-A Sen.

Placing	Competitor					MODEL							
	Surname	Name	Club	Country	Number of licence	Name	Scale	Water Line Length [mm]	Sail Area [m2]	Displacement [kg]	Linear Rating R	Logarithmical Rating Rlog	Static Evaluation [points]
1	Basina	Raisa	FSS Smolensk	RU	RUS-204	Team News Corp.	1:20	943	0,320	4,550	0,706	0,780	84,830
2	Štítek	Josaf	KLoM Nautilus Proboštov	CZ	CZE 028-008	Solway Maid	1:13	932	0,690	9,040	0,815	0,850	90,080
3	Basin	Aleksander	FSS Smolensk	RU	RUS-211	Team News Corp.	1:20	943	0,320	4,550	0,706	0,780	84,830
4	Mraková	Lenka	KLM Delta Pardubice	CZ	CZE 168-036	Lenka	1:10	958	0,521	11,300	0,676	0,770	88,750
5	Emler	Vratislav	KLM Admirál Jablonec n. N.	CZ	CZE 131-026	Vamarie	1:16,5	1000	0,668	14,700	0,732	0,800	94,750
6	Halama	Libor	KLM Admirál Jablonec n. N.	CZ		Pirate II	1:10	1000	0,760	9,200	0,912	0,920	85,580
7	Kmiecik	Jan	HMKZ Blachownia	PL	POL-842	Lacho Drom	1:3	930	0,470	9,100	0,670	0,770	85,080
8	Janoš	Milan	KLoM Brandýs nad Labem	CZ	CZE 079-037	Vltava	1:10	805	0,414	5,060	0,662	0,770	75,500
9	Stala	Marek	HMKZ Blachownia	PL	POL 814	Stormy Weather	1:12	990	0,800	13,000	0,826	0,850	83,420
10	Špišar	Jiří	KLoM Třebechovice p. O.	CZ	CZE 403-002	Endeavour	1:28	920	0,700	8,800	0,818	0,850	90,420
11	Šimůnek	Karel	KLoM Fregata, Bakov n. J.	CZ	CZE 316-010	Endeavour	1:24,65	1032	1,070	11,000	1,053	1,050	88,500
12	Kroupa	Milan	KLM Admirál Jablonec n. N.	CZ	131-011	Endeavour	1:24,6	1045	1,036	11,300	1,039	1,040	91,250
13	Walerita	René	KLoM Slezsko	CZ	CZE 336-005	Barracuda	1:10	1050	0,533	9,000	0,808	0,840	77,080
14	Chmelka	František	KLoM Slezsko	CZ	CZE 336-003	Trigger	1:12	1050	0,525	8,500	0,818	0,850	74,750

Points	Points	Points
Golden sail	Tri - Nation Cup	In sum European Challenge Cup points
178,50	178,50	357,00
179,52	176,38	355,90
172,55	170,09	342,64
148,93	138,46	287,39
104,78	141,69	246,47
101,26	102,00	203,26
95,85	77,54	173,39

Points	Points	Points
Golden sail	Tri - Nation Cup	In sum European Challenge Cup points
184,83	184,83	369,66
181,58	164,52	346,10
174,52	166,55	341,07
162,99	170,13	333,12
189,10	132,21	321,31
159,83	156,73	316,56
155,90	152,95	308,85
160,00	144,69	304,69
154,97	146,87	301,84
151,52	149,68	301,20
151,99	141,36	293,35
131,85	160,15	292,00
143,32	141,69	285,01
137,92	128,31	266,23

EVROPSKÝ POHÁR NSS NAVIGA 2016/ NAVIGA EUROPEAN CHALLENGE CUP 2016
NSS-B

Placing	Competitor				MODEL								
	Surname	Name	Club	Country	Number of licences	Name	Scale	Water Line Length [mm]	Sail Area [m2]	Displacement [kg]	Linear Rating R	Logarithmical Rating Rlog	Static Evaluation [points]
1	Duonik	Vladimir	Roslavl	RU		Amelia	1:17	870	0,570	8,800	0,698	0,780	89,250
2	Kolaczynski	Marek	HMKZ 39r Blachownia	PL	POL-990	Runa IV	1:10	830	0,740	9,300	0,745	0,800	89,420
3	Huk	Wojciech	HMKZ Blachownia	PL	POL-880	Viola	1:12	840	0,660	9,050	0,718	0,790	90,580
4	Slížek	Josef	KLoM Nautilus Proboštov	CZ	CZE 028-008	When and If	1:15,5	948	0,783	11,200	0,822	0,850	94,170
5	Mrákota	Josef	KLM Delta Pardubice	CZ	CZE 168-027	Jolie Brise	1:14	1 050	1,179	17,540	0,962	0,960	94,250
6	Šenekel	Michal	KLM Admirál Jablonec n. N.	CZ	CZE 131-040	Maritquita	1:18,7	1 215	1,742	15,300	1,417	1,270	94,830
7	Emler	Vratislav	KLM Admirál Jablonec n. N.	CZ	CZE 131-026	Thalassa	1:15	860	0,695	11,400	0,699	0,780	93,500
8	Dvořák	Milan	KLoM Kolín	CZ	CZE 140-045	Dorian Gray	1:15	910	1,285	11,210	1,011	1,010	80,920
9	Žeman	Jaroslav	KLoM Nautilus Proboštov	CZ	CZE 028-010	Brilliant	1:15	996	0,724	19,800	0,687	0,780	81,000
10	Kincel	Antonín	KLoM Slezsko	CZ	CZE 336-009	Runa IV	1:6,5	910	1,056	12,100	0,893	0,900	84,750
11	Mrázek	Pavel	KLoM Kolín	CZ	CZE 140-044	Dorian Gray	1:15	890	1,200	13,100	0,907	0,910	82,500
12	Kozák	Peter	KLoM Bojnice	SK	SVK 108-007	Mistral	1:16	1 010	0,870	10,300	0,950	0,950	91,420
13	Rásek	Petr	KLM Admirál Jablonec n. N.	0	CZE 131-037	Lizzie May	1:12	885	0,760	13,000	0,720	0,790	90,750
14	Pieczka	Dariusz	MKS Gwarek	PL	PL 836	Sun Fish	1:4	1 000	0,450	5,000	0,860	0,880	65,080
15	Kopecký	Zdeněk	KLM Bílá Třemešná	CZ	CZE 101-001	Dorian Gray	1:15	890	0,980	13,350	0,814	0,840	83,330
16	Kreisel	Jiří	KLM Admirál Jablonec n. N.	CZ	CZE 131-041	Colin Archer	1:15	830	0,540	11,200	0,598	0,750	0,000
16	Lukeš	Jakub (jun.)	KLoM Nautilus Proboštov	CZ	CZE 028-0xx	Betty CK 45	1:9	990	0,684	15,400	0,722	0,790	0,000

NSS-D

Placing	Competitor					MODEL							
	Surname	Name	Club	Country	Number of licence	Name	Scale	Water Line Length [mm]	Sail Area [m2]	Displacement [kg]	Linear Rating R	Logarithmical Rating Rlog	Static Evaluation [points]
1	Culek	Jindřich	KLoM Brandýs nad Labem	CZ	CZE 079-012	Dragon Fly 1200	1:10	1 220	0,705	7,995	1,123	1,110	78,75
2	Butkiewicz	Piotr	SpecModel Braniewo	PL	POL-822	Volans	1:30	950	0,332	2,600	0,873	0,890	50,58
3	Druša	Ladislav	KLoM Brandýs nad Labem	0	CZE 079-011	Volans	1:30	950	0,330	2,180	0,923	0,930	51,17

Points	Golden sail	Points	Tri - Nation Cup	In sum
189,02		187,36		376,38
183,39		189,42		372,81
184,68		184,17		368,85
185,44		182,87		368,31
176,83		185,37		362,20
183,99		175,57		359,56
173,26		170,96		344,22
166,20		157,89		324,09
147,42		166,96		314,38
149,62		152,14		301,76
147,61		146,48		296,09
168,06		127,00		295,06
118,83		153,33		272,16
126,53		143,47		270,00
142,45		83,33		225,78
0,00		0,00		0,00
0,00		0,00		0,00

Points	Golden sail	Points	Tri - Nation Cup	In sum
178,75		153,86		332,61
136,75		150,58		287,33
51,17		88,24		139,41

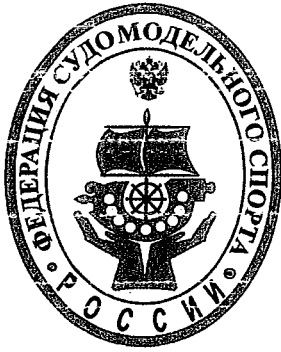
MODRÁ STUHA "Kristýny" 2016/ BLUE RIBBON OF KRISTINA LAKE 2016

Placing	Competitor					MODEL					Acquired Time T1 sec.	Evaluation Time		Points P1
	Surname	Name	Club	Number of licence	Country	Name	Scale	Water Line Length [mm]	Sail Area [m ²]	Displacement [kg]		Tz [s]	Tz1	
1	Basina	Raisa	FSS Smolensk	RUS-204	RU	Team News Corp.	1:20	943,00	0,32	4,55	4 515	3 521,70		50,00
2	Slížek	Josef	KLoM Nautilus Proboštov	CZE 028-008	CZ	Solway Maid	1:13	932,00	0,69	9,04	4 946	4 204,31		41,88
3	Kmieciak	Jan	HMKZ Blachownia	POL-842	PL	Lecho Drom	1:5	930,00	0,47	9,10	5 656	4 355,31		40,43
4	Basin	Aleksander	FSS Smolensk	RUS-211	RU	Team News Corp.	1:20	943,00	0,32	4,55	5 696	4 443,08		39,63
5	Kudriavtsev	Andrei (jun.)	FSS Smolensk	RUS 211	RU	Assa Abloy	1:20	943,00	0,32	4,55	5 710	4 453,80		39,54
6	Dudnik	Vladimir	Roslavl	RUS	RU	Amelia	1:17	870,00	0,57	8,30	5 760	4 492,80		39,19
7	Halama	Libor	KLM Admíral Jablonec n. N.		CZ	Pirate II	1:10	1 000,00	0,76	9,20	4 996	4 595,55		38,31
8	Jakeš	Tomáš (jun.)	KLoM Fregata, Bakov n. J.	CZE 316-017	CZ	Anatí	1:9,5	1 030,00	0,51	9,25	5 730	4 693,60		37,48
9	Janoš	Milan	KLoM Brandýs nad Labem	CZE 079-057	CZ	Vlava	1:10	805,00	0,41	5,06	6 212	4 782,98		36,81
10	Mráková	Lenka	KLM Delta Pardubice	CZE 168-036	CZ	Lenka	1:10	958,00	0,52	11,30	6 793	5 230,87		33,66
10	Huk	Wojciech	HMKZ Blachownia	POL-880	PL	Viola	1:12	840,00	0,66	9,05	6 822	5 231,12		33,66
12	Kroupa	Milan	KLM Admíral Jablonec n. N.	131-011	CZ	Endeavour	1:24,6	1 045,00	1,04	11,30	5 096	5 300,10		33,22
13	Mrákota	Josef	KLM Delta Pardubice	CZE 168-027	CZ	Joie Brise	1:14	1 050,00	1,18	17,54	5 753	5 522,40		31,89
14	Šenekel	Michal	KLM Admíral Jablonec n. N.	CZE 131-040	CZ	Mariquita	1:18,7	1 215,00	1,74	15,30	4 392	5 577,84		31,57
15	Manoim	Sofia (jun.)	FSS Smolensk	RUS 211	RU	Winston	1:20	943,00	0,32	4,55	7 520	5 865,60		30,02
16	Stala	Marek	HMKZ Blachownia	POL 814	PL	Stormy Weather	1:12	990,00	0,80	13,00	6 925	5 886,25		29,91
17	Mrázek	Pavel	KLoM Kolín	CZE 140-044	CZ	Dorian Gray	1:15	890,00	1,20	13,10	6 725	6 119,75		28,77
18	Zeman	Jaroslav	KLoM Nautilus Proboštov	CZE 028-010	CZ	Brilliant	1:15	995,80	0,72	19,80	7 850	6 123,00		28,76
19	Pieczka	Dariusz	MKS Gwarak	PL 836	PL	Sun Fish	1:4	1 000,00	0,45	5,00	7 767	6 834,67		25,76
20	Kopecký	Zdeněk	KLM Bílá Třešňná	CZE 101-001	CZ	Dorian Gray	1:15	890,00	0,98	13,35	8 267	6 944,00		25,36
21	Bašek	Petr	KLM Admíral Jablonec n. N.	CZE 131-037	0	Lizzie May	1:12	885,00	0,76	13,00	9 048	7 147,53		24,64
22	Dvořák	Milan	KLoM Kolín	CZE 140-045	CZ	Dorian Gray	1:15	910,00	1,29	11,21	10 165	10 266,65		17,15
23	Bažant	Tibor (jun.)	KLM Admíral Jablonec n. N.	CZE 131-092	CZ	Ocean	0	985,00	0,52	3,57	0			0,00





C



Federation of Shipmodeling and Shipmodeling Sport of Russia

World Shipmodeling Championship

In Section "C"

Kaliningrad, Russia

04-11 September 2016

Organizers:

- World Organization for Modelship Building and Modelship Sport NAVIGA
- Federation of Shipmodeling Sport of Russia
- The Government of the Kaliningrad Region
- Museum of the World Ocean, Federal state budgetary cultural institution

NAVIGA Official representative:

Dieter Matysik, President of NAVIGA, Germany

Chief Judge:

Martin van Gelderen, Leader of Section «C» NAVIGA, Netherlands.

Chief secretary:

Larissa Paskhalova, Ukraine

Official representative of the Organizing Committee:

Alexey Budanov
alexeibudanov@yandex.ru
Tel. +7 401 253 89 15

Venue:

Museum of the World Ocean, 1 Petr Velikij Embankment, Kaliningrad
www.world-ocean.ru

Championship site:

wc2016c.fsmr.ru

Dates:

04 – 11 September 2016

Valid rules:

NAVIGA rules for Section C 2011

Classes of models:

C1, C2, C3, C4, C5, C6, C7 for senior and junior sportsmen. C8 is a demonstration class and it includes models based on industrial sets made of composite materials (C-8A is analogous to C-1, C-8B is analogous to C-2)

Age limit for young people:

1999 at the earliest, inclusive

Start fee:	Seniors: EUR 30.0 per model Juniors: EUR 15.0 per model
Banquet:	EUR 20 per person
Protest:	EUR 10 per protest
Official registration starts:	May 20, 2016
Official registration finishes:	Applications are accepted up to the 30 th of June 2016 (they can be sent by fax, e-mail or post);
Registration terms:	<ul style="list-style-type: none"> • Applications for participation should be sent by a national association (federation) which is a current NAVIGA member; • Each national association (federation) should send its application for each sportsman and team in the appropriate form; • No individual applications are accepted. • Applications that have a signature and seal of the national association (federation) should be sent to the following address: • e-mail: wc2016c@fsmr.ru, (Excel and PDF scans)
Payment terms:	<ul style="list-style-type: none"> • National associations (federations) should pay all start fees via a bank transfer. • In order to register the fees should be paid before the 30th of July 2016.
Bank details:	Federation of Shipmodeling Sport of Russia, INN 7733102616, KPP 773301001, Settlement Account 40703810705000000005, Correspondence Account 30101810945250000174, BIC 044525174, OJSC «RGS Bank», Moscow
Documents for registration:	<ul style="list-style-type: none"> • Passport or any other type of ID document • Insurance covering all period of the Championship
Winners and prizes:	After the evaluation winners will be awarded with medals and diplomas in the following groups: Gold medals for scores ranging from 95 to 100, silver medals for scores ranging from 90,0 to 94,67; bronze medals for scores ranging from 85,0 to 89,67, in each class, seniors and juniors separately. Each participant obtains a certificate of participation. Gold medalists in all classes are awarded with an additional prize.
National flags and anthems:	At the registration each delegation should provide a national flag of its country (150 x 100 cm). After the closing ceremony the flags will be given back.
Technical check-up and registration of models:	Team leaders submit documents for all their teams.
Registration:	Registration and placement of models takes place on the 4 th of September, from 10 a.m. to 19 p.m. Registration Venue: Museum of the World Ocean, 1 Petr Velikij Embankment, Kaliningrad

Accommodation for participants:

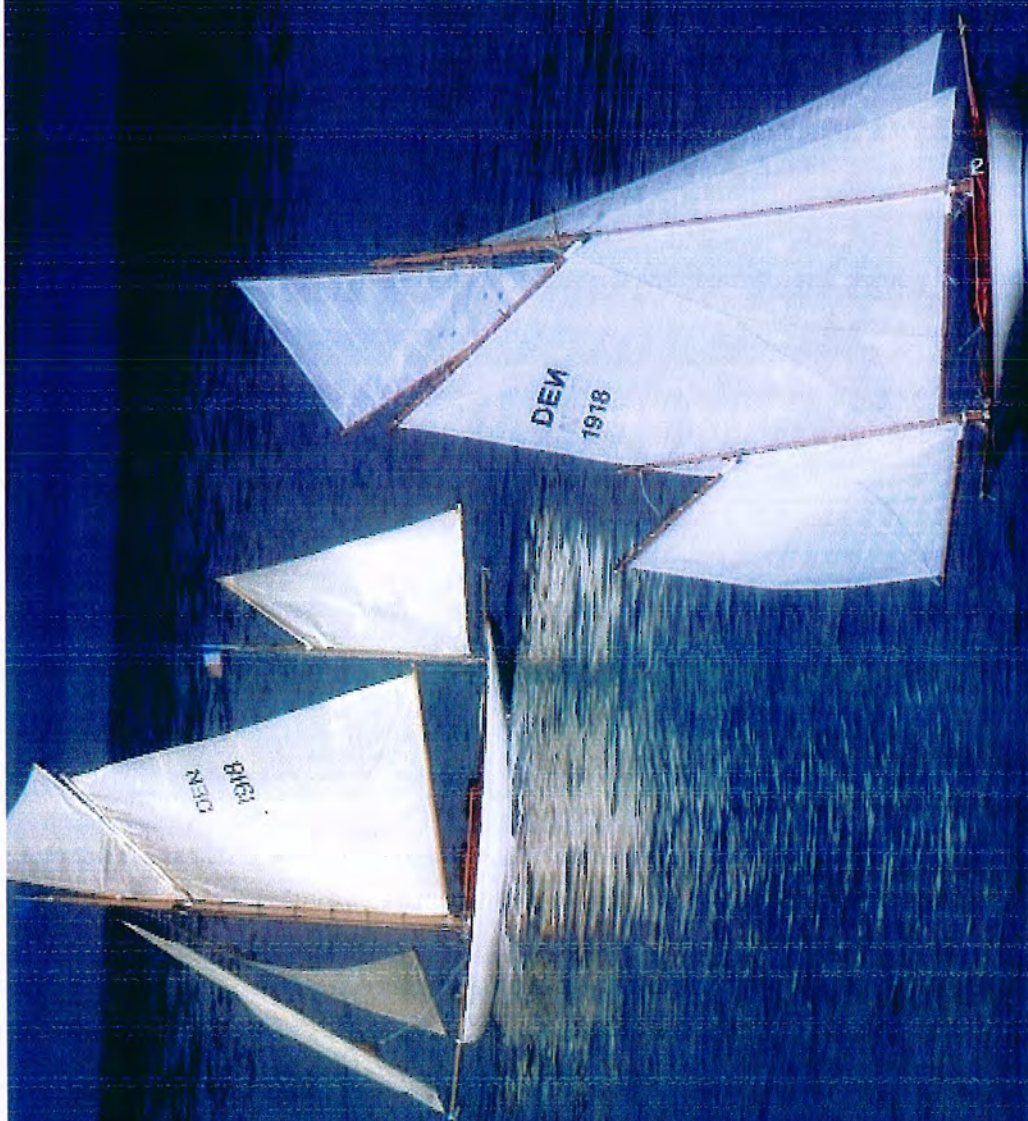
IBIS Hotel <http://www.ibis.com/ru/hotel-7258-ibis-%D0%BA%D0%B0%D0%BB%D0%B8%D0%BD%D0%B8%D0%BD%D0%B3%D1%80%D0%B0%D0%B4-%D1%85%D0%B5%D0%BD%D1%82%D1%80-/index.shtml>,

KALININGRAD Hotel <http://1kaliningrad.ru/hotels/kaliningrad.html>

WM Programme

	Time	Event
04 September, Sunday	10.00 – 19.00	Registration Registration and arrangement of models
05 September, Monday	09.00 – 12.00 12.00 – 13.00 13.00 – 14.00 15.00 – 19.00	Technical Conference Opening ceremony of the World Championship Buffet table Evaluation of classes C 1, C 2, C 5
06 September, Tuesday	09.00 – 20.00 09.00 – 13.00 14.00 – 19.00	Public exposition Evaluation of classes C 1, C 2, C 5
07 September, Wednesday	09.00 – 20.00 09.00 – 13.00 14.00 – 19.00	Public exposition Evaluation of classes C 1, C 2, C 5
08 September, Thursday	09.00 – 20.00 09.00 – 13.00 14.00 – 19.00	Public exposition Evaluation of classes C 3, C 4, C 6
09 September, Friday	09.00 – 20.00 08.00 – 20.00 09.00 – 13.00 14.00 – 19.00	Public exposition Day trip(excursion) Evaluation of classes C 3, C 4, C 6
10 September, Saturday	09.00 – 20.00 09.00 – 13.00 14.00 – 19.00 19.00 – 24.00	Public exposition Evaluation of classes C 3, C 6, C 7 Banquet
11 September, Sunday	09.00 – 12.00 10.00 – 12.00 13.00 – 15.00	Public exposition Closing ceremony and awarding Return of model ships





M

From may 6th till may 8th the anual racemeeting in Moers took placeyet once again. This year was already the 41th edition, so we cansafely say it is one of the "oldest" racemeeting in th M section.

As far as entries are concerned, it is sad too see that numbers getlower every year. I think we need to think over and reflect whythis is happening. One positive note is that there was a combinedeffort between Naviga (Nauticus in this case) and Lipo Masters.This resulted in a about 10 extra entries by LM racers. Moreefforts like this should be made to try and get everyone backtogether at the races, instead of running parallel events. The racein Moers is known for it s friendly atmosphere and usually attendedby several Nationalities, several sending their best racers. Thisresults in a very high level of competition with some excellentperformances in the different classes.

One of the answers is no doubt the high rising costs of travel andequipment, but i do believe there are other factors too. One of themajor costs are no doubt batteries, so in several different wayspeople are trying out new ways to keep the budget within reason.

It has become some sort of tradition to try out new ideas at theMoers event, which is needed in order to keep us upto date inregard to the Rules and technology. This year was no different,both Nauticus and the Lipo Masters people aretrying tout new ideas to solve the "battery issue". It becomes moreand more clear that something needs to be done in regard to theRules concerning batteries. Back in the days when Lipo technologywas allowed , we decided to set a weight limit to the batteries(280/560 grams). We could not find a better solutionback then but to do it like that. Over time capacity has constantlygone higher, and lifespan got lower and lower with every rise incapacity. Several people, including myself realize now that was amistake BUT back then we had no other option to do it like so. Manypeople have suggested we look for another way in regards to theLipo Rules.

One of those ideas is to impose a certain type of motor(type), evenpropeller and next to use much heavier (read more durable)batteries. The concept of higher weight batteries worksperfect because they will never be emptied like we are doing now.The only trouble i have with imposed motors is, it limits thepeople's FREE choice of material they want to use. In other words,only 1 type or brand of motor is unfair towards every othermanufactor but that brand! This idea may work very well on a localor club level, but is not the solution for Naviga. Obviouslylifting the weight restriction of 280 gram to another weight willnot change anything if we do not find a way to prevent thosebatteries from being emptied like we do now.

In rc car racing they do not have this problem, why? Because incars it it almost impossible to use the full capacity of thebatteries. Especially in off road racing it is impossible to useall the Energy the Lipo pack can deliver, resulting in much betterbattery life. We all agree that next to F5-B and F5-D airplane'sthere is nothing worse you can do to a Lipo battery but boatracing! Our average Amp draw is of such nature it will always putan enormous load on the batteries, this combined with our limitedweight results in poor battery life. Everyone will still rememberthe end of the NiMh era, where quality was bad to say the least.Over time more and more capacity was put into those NiMh cells,resulting in very short life. Exactly the same situation as we areheading to now!

Since a few months now, i started testing an Energy Limitingdevice. Not just me, since these tests are being done by otherpeople in other countries too. Under my supervision, iallowed (1 very well established prominent Belgian racer) torace with over weight batteries, under the strict condition he/shedoes not have ANY advantage towards the rest of the racers. Therresults are much better then we could ever imagine.

Using a very cheap (30 5800mAh Lipo weighing 390 gr) we found outthe results were very similar to using "iegal" batteries when theEnergy was limited to 3200Watt minutes or 53Wh. The latest Lipo'sare capable of delivering that level of Energy too, but only a fewtimes before they end up in the dustbin! By using an Energy limiterwe want to show that is perfectly possible to use just 1 batteryfor the whole season, maybe even longer without stressing thatbattery. Using such a device takes the battery weight out of theequation, it does not matter anymore what type or weight thebattery is, you can only use a certain amount of Energy

Saturday 2nd and Sunday 3rd of Juli 2016 we had a joint RCBSA/Lipo Masters/Eco DEC racemeeting in Aarschot, Belgium. The lake is situated on a camping and is by far one of the most beauty full locations in Belgium. It has been tradition to host a Lipo Masters race in Belgium for the last few years, but one of this magnitude was a first for all. In all 78 boats were registered with participants from Belgium, Germany, France, Luxemburg and the Netherlandus. With enough participants in all the classes, 13!!! different classes were run. A real broad spectrum of classes including several classes specific to Lipo Masters or Eco DEC were run, amongst them mono AS, mono BS and Eco start, Eco S6. It gives me great pleasure to then see the mixture of different classes is well appreciated by all, showing there is still an interest in boat racing, whatever the format.

Unfortunately the weather Gods let us down on Saturday, resulting in some real heavy rain thunderstorm. At one point it got so bad racing had to be stopped because of the bad weather conditions. For the rest the meeting ran smoothly with virtually no hick ups or problems and all classes ran 2 heats. Sunday morning brought some better weather, but apart from the occasional rain shower, it even turned nice and sunny by mid day. With a remarkable smoothness another 2 heats were run in all classes, resulting in a total of 52 heats being run over the weekend. Without having to wait for any competitor, everyone was ready to go when they supposed to. I can only applaud the Organizers and the competitors for their magnificent effort.

What some of the specific "limited" classes is concerned, to me it is a good thing people realize there are certain problems with Lipo 's and different solutions are now examined and tested. Whatever method will turn out to be the best solution is not important at this point. The fact that people are searching for better ways proves to me there are still people concerned about the future of boat racing!

Which brings me to the next point: Apart from the traditional Naviga classes i often hear people talk about speed events like SAW and powerboat racing, classes that have no existence within the current Naviga classes. Would there possibly be a need or desire for such type of racing, i am sure a sub section in the M class or even a complete new section could be founded in order to have official World, Continental Championships in those classes. Think about the possibilities!

I like to think Naviga is not a static body, but one that is able to adapt to new needs and desires.

Walter Geens

Naviga M section leader



Federazione Italiana NAVIMODEL

Giudici: Roberto Bigi-Isacco Fornaciari-Gherardo Mioc



14° Trofeo Navimodellistico Città di Campogalliano - 23/24 Aprile 2016

Sono state sommate le 2 migliori prestazioni su 6 manches disputate - Two best results on six manches

Eco Expert

1° Polisac Urban *	Slovenia	73/ 12'04"
2° Mavru sorin *	Romania	66/ 12'30"
3° Kremser Jaro *	Slovenia	64/ 12'12"
4° Turrini Andrea	Bologna	61/ 12'09"
5° Bosi Luca	Bologna	58/ 12'17"
6° Castagnetti Claudio	Reggio E.	54/ 12'19"
7° Priviterio Erenesto	Bologna	49/ 09'50"

Mono 1

1° Petroi Cristian*	Romania	51/ 12'08"
2° Mavru Sorin *	Romania	50/ 12'19"
3° Casini Sergio	Firenze	49/ 12'16"
4° Siragusa Piero	Arezzo	47/ 12'14"
5° Saylon Marc	Lucca	47/ 12'19"
6° Mioc Gherardo	Firenze	46/ 12'06"
7° Conti Massimo	Firenze	46/ 12'08"
8° Pulicanò Giuseppe	Figline	46/ 12'13"
9° Ropso Fedele	Como	44/ 12'03"
10° Wilmer Magnanini	Modena	43/ 12'10"
11° Kremser Jaro *	Slovenia	43/ 12'16"
12° Castagnetti Claudio	Reggio E.	43/ 12'38"
13° Vasile Gabriel *	Romania	42/ 12'32"
14° Schaller Urs	Firenze	41/ 12'53"
15° Gasparin Gherardo	Padova	37/ 12'24"
16° Bontadini Andrea	Milano	36/ 12'28"
17° Turrini Andrea	Bologna	07/ 12'00"

Mono 2

1° Fornaciari Isacco	Reggio E.	53/ 12'24"
2° Petroi Cristian *	Romania	51/ 12'18"
3° Valbusa Matteo	Varese	49/ 12'20"
4° Brailoiu Adrian*	Romania	49/ 13'06"
5° Conti Massimo	Firenze	48/ 12'21"
6° Castagnetti Claudio	Reggio E.	48/ 12'31"
7° Ropso Fedele	Como	46/ 12'12"
8° Mavru sorin *	Romania	46/ 12'25"
9° Bigi Roberto	Reggio E.	41/ 11'14"
10° Schaller Urs	Firenze	37/ 12'06"

Hydro 1

1°	Mitja Jeric*	Slovenia	55/ 12'19"
2°	Kremser Jaro *	Slovenia	54/ 12'10"
3°	Porcoteanu Cornel *	Romania	53/ 11'04"
4°	Mioc Gherardo	Firenze	52/ 12'22"
5°	Mavru sorin *	Romania	50/ 11'42"
6°	Magnanini Wilmer	Modena	50/ 12'10"
7°	Casini Sergio	Firenze	49/ 12'11"
8°	Saylon Marc	Lucca	41/ 09'42"
9°	Turrini Andrea	Bologna	39/ 12'13"
11°	Polisac Urban *	Slovenia	21/ 05'41"
10°	Brailoiu Adrian*	Romania	18/ 12'00"
12°	Bontadini Andrea	Milano	13/ 3'51"

Hydro 2

1°	Porcoteanu Cornel *	Romania	56/ 12'17"
2°	Mavru sorin *	Romania	51/ 12'04"
3°	Poljsac Urban *	Slovenia	49/ 11'56"
4°	Brailoiu Adrian *	Romania	37/ 11'27"
5°	Kremser Jaro *	Slovenia	35/ 08'41"
6°	Saylon Marc	Lucca	10/ 02'25"

I concorrenti con l'asterisco non sono iscritti alla Navimodel





EM Ungary 2016 Startinglist

Felnőtt korcsoport kategóriánként:

1.

F3E				
	Vez.név	Ker. név	Ország	Szül. év
1.	Bertók	István	Magyar	1966.01.10
2.	Miroshnichenko	Pavlo	Ukrajna	1994.07.03
3.	Dimitrov	Emil	Bulgária	1994.02.21
4.	Stolarek	Adrian	Lengyel	1983.12.30
5.	Wozniak	Mateusz	Lengyel	1992.04.13
6.	Wozniak	Krzysztof	Lengyel	1995.03.31
7.	Zomb	Piotr	Lengyel	1988.12.11

F3V				
	Vez.név	Ker. név	Ország	Szül. év
1.	Bertók	István	Magyar	1966.01.10

F1E				
	Vez.név	Ker. név	Ország	Szül. év
1.	Novics	József	Magyar	1985.10.23
2.	Sasvári	János	Magyar	1943.08.21
3.	Bubenik	Tomas	Cseh	1979.03.04
4.	Kovács	Gyula	Magyar	1973.09.28
5.	Ascher	Ernst	Német	
6.	Winkler	Jürgen	Német	
7.	Benke	Andreas	Német	
8.	Luplow	Maik	Német	
9.	Dzwonkowski	Jacek	Lengyel	1974.06.01

F1V 3,5				
	Vez.név	Ker. név	Ország	Szül. év
1.	Leksikov	Zsolt	Magyar	1971.08.06
2.	Dencs	Bence	Magyar	1994.09.30
3.	Winkler	Jürgen	Német	

F1V 15				
	Vez.név	Ker. név	Ország	Szül. év
1.	Bertók	István	Magyar	1966.01.10
2.	Válik	Zoltán	Magyar	1978.07.01
3.	Boti	Ferenc	Magyar	1967.03.11
4.	Shepel	Aleksandr	Orosz	1996.03.12
5.	Bayderyakov	Sergey	Orosz	1960.04.15
6.	Ascher	Ernst	Német	
7.	Winkler	Jürgen	Német	

2.

	Eco Expert			
	Vez.név	Ker. név	Ország	Szül. év
1.	Barta	Róbert	Magyar	1982.08.30
2.	Bubenik	Tomas	Cseh	1979.03.04
3.	Lukesova	Kristyna	Cseh	1991.01.31
4.	Procházka	Jan	Cseh	1993.11.20
5.	Gromov	Fgeniy	Ukrajna	1967.07.30
6.	Utyeshev	Alexey	Ukrajna	1982.05.23
7.	Boti	Ferenc	Magyar	1967.03.11
8.	Spitcyn	Dmitry	Orosz	1970.06.05
9.	Tóth	József	Magyar	1962.12.24
10.	Feldan	Claudiu	Románia	1967.07.31
11.	Danila	Cosmin	Románia	1980.04.17
12.	Poljsak	Urban	Szlovénia	1980.08.07
13.	Hristov	Stanislav	Bulgária	1971.01.02
14.	Dimitrov	Denis	Bulgária	1997.09.29
15.	Markov	Dimitar	Bulgária	1996.11.27
16.	Dimitrov	Dimitar	Bulgária	1982.08.17
17.	Kostyuk	Alexander	Orosz	1983.01.27
18.	Fink	Jörg	Német	
19.	Luplow	Maik	Német	
20.	Krieger	Ulrich	Német	
21.	Kachnowicz	Andrej	Lengyel	1954.11.29
22.	Krawczyk	Filip	Lengyel	1995.05.23
23.	Dzwonkowski	Jacek	Lengyel	1974.06.01
24.	Wozniak	Mateusz	Lengyel	1992.04.13
25.	Wozniak	Krzysztof	Lengyel	1995.03.31
26.	Zomb	Piotr	Lengyel	1988.12.11

3.

	Mini Eco Expert			
	Vez.név	Ker. név	Ország	Szüi. év
1.	Bartos	Martin	Cseh	1996.03.05
2.	Linhart	Lukas	Cseh	1985.08.20
3.	Lukesova	Kristyna	Cseh	1991.01.31
4.	Miletin	Miroslav	Cseh	1990.04.18
5.	Srsen	Jan	Cseh	1985.07.06
6.	Gromov	Fgeniy	Ukrajna	1967.07.30
7.	Kovalenko	Andriv	Ukrajna	1972.12.25
8.	Paskhalova	Larysa	Ukrajna	1964.09.18
9.	Prymakov	Yurii	Ukrajna	1997.10.28
10.	Utyeshev	Alexey	Ukrajna	1982.05.23
11.	Romanov	Roman	Orosz	1997.10.14
12.	Spitcyn	Dmitry	Orosz	1970.06.05
13.	Nagy	Tamás	Magyar	1986.09.26
14.	Katona	János	Magyar	1960.09.25
15.	Katona	Viktória	Magyar	1992.02.07
16.	Tóth	József	Magyar	1962.12.24
17.	Mavru	Sorin	Románia	1972.02.17
18.	Feldan	Claudiu	Románia	1967.07.31
19.	Danila	Cosmin	Románia	1980.04.17
20.	Hristov	Stanislav	Bulgária	1971.01.02
21.	Viarkov	Dimitar	Bulgária	1996.11.27
22.	Dimitrov	Dimitar	Bulgária	1982.08.17
23.	Petkov	Petko	Bulgária	1956.08.22
24.	Kostyuk	Alexander	Orosz	1983.01.27
25.	Luplow	Maik	Német	
26.	Krieger	Ulrich	Német	
27.	Krawczyk	Filip	Lengyel	1995.05.23
28.	Dzwonkowski	Jacek	Lengyel	1974.06.01
29.	Wozniak	Mateusz	Lengyel	1992.04.13
30.	Wozniak	Krzysztof	Lengyel	1995.03.31
31.	Zomb	Piotr	Lengyel	1988.12.11

4.

	FSRE			
	Vez.név	Ker. név	Ország	Szül. év
1.	Bubenik	Tomas	Cseh	1979.03.04
2.	Kodytkova	Petra	Cseh	1987.04.20
3.	Linhart	Lukas	Cseh	1985.08.20
4.	Feldan	Claudiu	Románia	1967.07.31
5.	Danila	Cosmin	Románia	1980.04.17
6.	Markov	Stefan	Bulgária	1966.09.23
7.	Zahariev	Ivan	Bulgária	1969.08.29
8.	Petkov	Petko	Bulgária	1956.08.22
9.	Kostyuk	Alexander	Orosz	1983.01.27
10.	Mang	Christoph	Német	
11.	Benke	Andreas	Német	
12.	Luplow	Maik	Német	
13.	Krieger	Ulrich	Német	
14.	Sobczyk	Marek	Lengyel	1950.09.21

	Eco Team			
	Vez.név	Ker. név	Ország	Szül. év
1.	Bubenik	Tomas	Cseh	1979.03.04
2.	Lukesova	Kristyna	Cseh	1991.01.31
3.	Procházka	Jan	Cseh	1993.11.20
4.	Utyeshev	Alexey	Ukrajna	1982.05.23
5.	Spitcyn	Dmitry	Orosz	1970.06.05
6.	Mavru	Sorin	Románia	1977.02.17
7.	Feldan	Claudiu	Románia	1967.07.31
8.	Danila	Cosmin	Románia	1980.04.17
9.	Markov	Dimitar	Bulgária	1996.11.27
10.	Dimitrov	Dimitar	Bulgária	1982.08.17
11.	Kostyuk	Alexander	Orosz	1983.01.27
12.	Fink	Jörg	Német	
13.	Benke	Andreas	Német	
14.	Luplow	Maik	Német	
15.	Schiller	Patrick	Német	
16.	Krieger	Ulrich	Német	
17.	Kachnowicz	Andrej	Lengyel	1954.11.29
18.	Wozniak	Mateusz	Lengyel	1992.04.13
19.	Wozniak	Krzysztof	Lengyel	1995.03.31

5.

	Mini Eco Team			
	Vez.név	Ker. név	Ország	Szül. év
1.	Barta	Róbert	Magyar	1982.08.30
2.	Bartos	Martin	Cseh	1996.03.05
3.	Cizek	Lukas	Cseh	1990.03.02
4.	Dostalova	Zdenka	Cseh	1983.04.27
5.	Kodytkova	Petra	Cseh	1987.04.20
6.	Linhart	Lukas	Cseh	1985.08.20
7.	Lukesova	Kristyna	Cseh	1991.01.31
8.	Miletin	Miroslav	Cseh	1990.04.18
9.	Procházka	Jan	Cseh	1993.11.20
10.	Srsen	Jan	Cseh	1985.07.06
11.	Gromov	Fgeniy	Ukrajna	1967.07.30
12.	Kovalenko	Andriy	Ukrajna	1972.12.25
13.	Utyeshev	Alexey	Ukrajna	1982.05.23
14.	Spitcyn	Dmitry	Orosz	1970.06.05
15.	Mavru	Sorin	Románia	1972.02.17
16.	Feldan	Claudiu	Románia	1967.07.31
17.	Danila	Cosmin	Románia	1980.04.17
18.	Markov	Dimitar	Bulgária	1996.11.27
19.	Dimitrov	Dimitar	Bulgária	1982.08.17
20.	Kostyuk	Alexander	Orosz	1983.01.27
21.	Luplow	Maik	Német	
22.	Schiller	Patrick	Német	
23.	Krieger	Ulrich	Német	
24.	Krawczyk	Filip	Lengyel	1995.05.23
25.	Dzwonkows	Jacek	Lengyel	1974.06.01

Mini Hydro				
	Vez. név	Ker. név	Ország	Szül. év
1.	Weiß	Bernd	Német	1965.05.05
2.	Scserbinyi	Szergej	Magyar	1975.12.16
3.	Dmitriev	Dmitry	Orosz	1961.07.06
4.	Cizek	Lukas	Cseh	1990.03.02
5.	Lukesova	Kristyna	Cseh	1991.01.31
6.	Miletin	Miroslav	Cseh	1990.04.18
7.	Klementev	Olag	Orosz	1956.03.21
8.	Grumov	Fgeniy	Ukrajna	1967.07.30
9.	Kovalenko	Andriy	Ukrajna	1972.12.25
10.	Prymakov	Yurii	Ukrajna	1997.10.28
11.	Rudenko	Pavlo	Ukrajna	1970.11.23
12.	Boti	Ferenc	Magyar	1967.03.11
13.	Czimre	Attila	Magyar	1973.11.12
14.	Romanov	Roman An	Orosz	1967.05.27
15.	Romanov	Roman	Orosz	1997.10.14
16.	Mavru	Sorin	Románia	1972.02.17
17.	Georgiev	Krasimir	Bulgária	1970.11.17
18.	Hristov	Stanislav	Bulgária	1971.01.02
19.	Fink	Jörg	Német	
20.	Petz	Adreas	Német	
21.	Luplow	Maik	Német	
22.	Schiller	Patrick	Német	
23.	Krawczyk	Filip	Lengyel	1995.05.23
24.	Wozniak	Mateusz	Lengyel	1992.04.13
25.	Nitecki	Rafal	Lengyel	1981.05.02

8.

	Mini Mono			
	Vez. név	Ker. név	Ország	Szül. év
1.	Barta	Róbert	Magyar	1982.08.30
2.	Cizek	Lukas	Cseh	1990.03.02
3.	Kozlowski	Michal	Lengyel	1996.07.29
4.	Penconek	Karol	Lengyel	1994.03.03
5.	Grumov	Fgeniy	Ukrajna	1967.07.30
6.	Kovalenko	Andriy	Ukrajna	1972.12.25
7.	Rudenko	Pavlo	Ukrajna	1970.11.23
8.	Yakovenko	Adrii	Ukrajna	1985.12.09
9.	Dánielfy	Csaba	Magyar	1959.06.19
10.	Mavru	Sorin	Románia	1972.02.17
11.	Georgiev	Krasimir	Bulgária	1970.11.17
12.	Fink	Jörg	Német	
13.	Petz	Adreas	Német	
14.	Schmidt	Randolf	Német	
15.	Luplow	Maik	Német	
16.	Schiller	Patrick	Német	
17.	Sobczyk	Marek	Lengyel	1950.09.21

	Mono I			
	Vez. név	Ker. név	Ország	Szül. év
1.	Bartos	Martin	Cseh	1996.03.05
2.	Kozlowski	Michal	Lengyel	1996.07.29
3.	Penconek	Karol	Lengyel	1994.03.03
4.	Yakovenko	Adrii	Ukrajna	1985.12.09
5.	Nagy	Sándor	Magyar	1954.09.14
6.	Czobor	Krisztián	Magyar	1974.09.11
7.	Nagy	Sándor	Magyar	1979.03.10
8.	Szakony	István	Magyar	1967.01.03
9.	Miklósi	István	Magyar	1965.09.16
10.	Tuca	Mighel Cat	Román	1971.07.07
11.	Petroi	Cristian	Román	1968.07.02
12.	Markov	Stefan	Bulgária	1966.09.23
13.	Zahariev	Ivan	Bulgária	1969.08.29
14.	Fink	Jörg	Német	
15.	Petz	Adreas	Német	
16.	Schiller	Patrick	Német	
17.	Zawdzki	Marcin	Lengyel	1980.12.16
18.	Sobczyk	Marek	Lengyel	1950.09.21

9.

	Mono II			
	Vez. név	Ker. név	Ország	Szül. év
1.	Majoros	László	Magyar	1971.09.27
2.	Kozłowski	Michał	Lengyel	1996.07.29
3.	Penconek	Karol	Lengyel	1994.03.03
4.	Yakovenko	Adrii	Ukrajna	1985.12.09
5.	Czimre	Attila	Magyar	1973.11.12
6.	Czobor	Krisztián	Magyar	1974.09.11
7.	Dánielfy	Csaba	Magyar	1959.06.19
8.	Miklósi	István	Magyar	1965.09.16
9.	Petroi	Cristian	Román	1968.07.02
10.	Porcoteanu	Cornel	Románia	1969.04.11
11.	Fink	Jörg	Német	
12.	Petz	Adreas	Német	
13.	Schmidt	Randolf	Német	
14.	Schiller	Patrick	Német	
15.	Wozniak	Krzysztof	Lengyel	1995.03.31
16.	Zawdzki	Marcin	Lengyel	1980.12.16
17.	Sobczyk	Marek	Lengyel	1950.09.21

International Referee

Strichter International Count	Name	Surname	Date of Expiry
Poland	Miarka	Mirosław	01.03.2015
Russia	Safarov	Souleyman	01.04.2015
Hungaria	Báthge	Karoly	01.05.2015
Hungaria	Kukorelli	Karoly	01.05.2015
Germany	Föll	Matthias	01.11.2015
Poland	Wyrzykowski	Marian	01.11.2015
Germany	Jankowsky	Hartmut	01.06.2016
New Zealand	Kockott	Antony	01.06.2016
Poland	Chyla	Grzegorz	01.07.2016
Germany	Dvcrák	Borek	01.07.2016
Germany	Gmeiner	Tina	01.07.2016
Germany	Graupmann	Bernhard	01.07.2016
Poland	Nagly	Alojzy	01.07.2016
Poland	Nowak	Grzegorz	01.08.2016
Russia	Polukhovitch-Sernitsky	Anatoliy	01.10.2016
Poland	Dutkovski	Karol	01.11.2016
Poland	Kordowiecki	Jerzy	01.11.2016
Poland	Kistowski	Dariusz	01.11.2016
Poland	Springer	Jerzy	01.11.2016
Poland	Albrecht	Romuald	01.11.2016
Poland	Kremski	Jan	01.11.2016
Germany	Etzel	Herman	01.12.2016
Slowenia	Pulec	Lea	01.12.2016
Germany	Matysik	Dieter	01.12.2016
Ukraine	Vadym	Goshko	01.12.2016
Austria	Doppler	Hekmuth	01.01.2017
Austria	Kukula, Arch.	Hans	01.01.2017
Poland	Pieczka	Barbara	01.02.2017
Poland	Jermolaj	Grzegorz	01.02.2017
Poland	Maciej	Kozłowski	01.02.2017
Ukraine	Novak	Olga	01.04.2017
Denmark	Reichert	Thomas	01.04.2017
Russia	Graschenkov	Alexander	01.04.2017
Russia	Tretyakov	Valentin	01.04.2017
Ukraine	Novak	Yuriy	01.04.2017
Poland	Walczak	Marek	01.04.2017
Denmark	Roden	Bendt	01.04.2017
Germany	Ströbl	Rüdiger	01.04.2017
Poland	Ciecwierz	Zbigniew	01.04.2017
Poland	Daranowski	Michał	01.04.2017
Russia	Bobkov	Dmitry	01.04.2017
Switzerland	Boos	Peter	01.05.2017
Germany	Jancke	Uwe	01.06.2017
Bulgaria	Arsenov	Asen	01.08.2017
Bulgaria	Gantcshev	Dimitar	01.08.2017
Belarus	Petrushenko	Viktor S.	01.08.2017
Bulgaria	Michailov	Todor	01.08.2017
Bulgaria	Genova	Janet	01.08.2017
Bulgaria	Hristo	Jotov	01.08.2017
Bulgaria	Hristov	Josif	01.08.2017

Bulgaria	Genov	Evgeni	01.08.2017
Bulgaria	Petkov	Petko	01.08.2017
Bulgaria	Jankov	Nikola	01.08.2017
Bulgaria	Wodenitscharov	Altimir	01.08.2017
Bulgaria	Kovatschev	Ilja	01.08.2017
Bulgaria	Tabakov	Nedko	01.08.2017
Bulgaria	Mitev	Nedeltscho	01.08.2017
Bulgaria	Mitzulov, Dr.	Nentscho	01.08.2017
Bulgaria	Panajotov	Kolja	01.08.2017
Bulgaria	Ignatov	Petar	01.08.2017
Bulgaria	Stevanova	Williana	01.08.2017
Bulgaria	Jotcv	Javor	01.08.2017
Bulgaria	Sandev	Svetlomisr	01.08.2017
Bulgaria	Solakov	Ivan	01.08.2017
Ukraine	Vlasov	Yurii	01.09.2017
Ukraine	Demidenko	Sergii	01.09.2017
Ukraine	Mandrika	Valeriy	01.09.2017
Germany	Hinterseher	Wolfgang	01.11.2017
France	Morel	Catherine	01.12.2017
France	Morel	Philippe	01.12.2017
France	Perrot	Didier	01.02.2018
Austria	Harrer	Karl	01.02.2018
France	Costa	Evelyne	01.02.2018
France	Didier	Cécile L.	01.02.2018
France	Lasserre	François	01.02.2018
France	Lassoujade	Yvan	01.02.2018
Germany	Dahm	Elisabeth	01.02.2018
France	Lassoujade	Sylvie	01.02.2018
Germany	Vees	Ernst	01.02.2018
Germany	Borchers	Hans-Jürgen	01.02.2018
Germany	Brecklinghaus	Werner	01.02.2018
Germany	Fonk	Rainer	01.02.2018
Germany	Ruess	Joachim	01.02.2018
Germany	Türk	Eberhard	01.02.2018
Great Britan	Harvey	Martin	01.03.2018
Great Britan	Shipman	Mark	01.03.2018
Great Britan	Barrow	Peter	01.03.2018
Great Britan	Harvey	David	01.03.2018
Italia	Onesto	Francesco	01.06.2018
Germany	Hauenschild	Christopher	01.06.2018
Italia	Bigi	Roberto	01.06.2018
Italia	Barbieri	Giancarlo	01.06.2018
Germany	Hauenschild	Sigurd	01.06.2018
Russia	Samartsev	Nikoley	01.08.2018
Croatia	Mitic	Mladen	01.08.2018
Great Britan	Taylor	Vince	01.10.2018
Great Britan	Robinson	Stuart	01.10.2018
Great Britan	Robinson	Heather	01.10.2018
Nederlands	Mulder	Arnold jr.	01.10.2018
Beigium	Boecksteyns		01.11.2018
Beigium	Geens	Walter	01.11.2018

Germany	Bolin	Klausdieter	01.12.2018
Germany	Linde	Hans	01.12.2018
Austria	Moser	Leopold	01.12.2019
Austria	Wolfinger	Manfred	01.12.2019
Poland	Stolarek	Adrian	01.12.2019
Austria	Turk	Helmut	01.12.2019
Austria	Oberreiter	Gerald	01.12.2019
Austria	Hohl	Herbert	01.12.2019
Austria	Muchitsch	Franz	01.12.2019
Austria	Buchegger	Karl Heinz	01.12.2019
Austria	Kastner	Karl	01.12.2019
Austria	Grammer	Jürgen	01.12.2019
Hungaria	Lekszykov, Dr.	Gabor	22.01.2020
Hungaria	Lekszykov	Zolt	22.01.2020
Hungaria	Bertok	Istvan	22.01.2020
Hungaria	Czobor	Krisztian	22.01.2020
Hungaria	Nagy	Sandor	22.01.2020
Hungaria	Varady	Istvan	22.01.2020
Hungaria	Daniely	Csaba	22.01.2020
Hungaria	Majoros	Laslo	22.01.2020
Belgium	Lagaert	Marie-Jeanne	01.02.2020
Germany	Brecklinghaus	Anton	11.02.2020
Italy	Giraldi	Giuseppe	22.02.2020
Germany	Himme	Torsten	25.02.2020
Russia	Chicherin	Alexey	26.02.2020
Russia	Bogdanova	Lyudmila	28.02.2020
Russia	Kuznetsov	Alexander	28.02.2020
Russia	Kuznetsov	Alexey	28.02.2020
Russia	Bogdanov	Alexander	28.02.2020
Sweden	Andersson	Sven	01.03.2020
Poland	Czarczyński	Andrzej	01.03.2020
Poland	Martinus	Engelbert	01.03.2020
Ukraine	Koval	Andrii	01.03.2020
Sweden	Jerksten	Lennart	01.03.2020
Sweden	Jerksten	Eva-Lena	01.03.2020
Poland	Zięcina	Wacław	01.03.2020
Slovenia	Melansek	Janez	01.04.2020
Slovenia	Skoflek	Avzugst	01.04.2020
Slovenia	Vodovcnik	Janez	01.04.2020
Slovenia	Kohan	Melita	01.04.2020
France	Cauty	Jean-Claude	01.04.2020
Poland	Leoniec	Jaroslav	01.04.2020
France	Chauchet	Henri	01.04.2020
Poland	Leoniec	Jan	01.04.2020
Slovenia	Koban	Rado	01.04.2020
Slovenia	Matjasec	Iztok	01.04.2020
France	Lutinger	Gérard	01.04.2020
Germany	Weiß	Bernd	24.04.2020
Netherlands	van Geideren	Martin	01.05.2020
Poland	Ryszard	Bones	11.05.2020
Poland	Kruczkiewicz	Mieczysław	11.05.2020

Czech Rep	Lejsek	Jiri	01.12.2020
Russia	Zhornik	Vladimir	01.12.2020
Czech Rep	Holan	Otakar	01.12.2020
Czech Rep	Hanzlik, Ing.	Zdenek	01.12.2020
Czech Rep	Hanuska	Ladislav	01.12.2020
Czech Rep	Ferjancic	Bohuslav	01.12.2020
Russia	Nazarov	Victor	01.12.2020
Russia	Rodenko	Alexander	01.12.2020
Czech Rep	Vasicek	Alois	01.12.2020
Russia	Prisukhin	Alexey	01.12.2020
Germany	Dahm	Michael	01.12.2020
Czech Rep	Navrátilova	Anna	01.12.2020

Country/s	Name	Surname	Street	Town	Mail	Lizenz- nummer	Quali	Classes	Date of Expiry
Armenia	Shahazizyan	Hrachya	27 Ervand Kocherapp 14	AM-375070 Yeravan	hshahaziz@yahoo.com	AM-01	C-J	A/B	01.12.2020
Armenia	Shahazizyan	Arman	Erzik Koxbatzu 2A. 73	AM-375010 Yeravan	hshahaziz@yahoo.com	AM-03	B	A/B	01.12.2020
Austria	Kukula, Arch.	Hans	Wittgensteinstrasse 11E	AT-1238 Vienna	arch.kukula.witt@aon.at	AT-03	C-J	S	01.01.2017
Austria	Türk	Helmut	Samperstrasse 18a	AT-1190 Wien	tuerk.helmut@a1.net	AT-08	C-J	S	01.12.2019
Austria	Wolffinger	Manfred	Gurldersstrasse 2	AT-4470 Enns	Manfred.Wolffinger@aon.at	AT-11	C-J	S	01.12.2019
Austria	Kastner	Karl	Niederruthstrasse 45	AT-4020 Linz	karl.kastner@gmx.at	AT-14	B	NS: M	01.12.2019
Austria	Moser	Leopold	Ginskeyweg 4	AT-4863 Seewelschen	leamattersee@gmail.com	AT-16	A	S	01.12.2019
Austria	Oberreiter	Gerald	Untere Danringgasse 13	AT-4431 Haidershofen	gerald.oberreiter@aon.at	AT-18	A	S	01.12.2019
Belgium	Lagaert	Marie-Jeanne	Ommegangstraat 52	BE-9080 Lochristi	danny.nicholls@telenet.be	BE-11	C-J	FSR	01.02.2020
Belgium	Geens	Walter	Molenstraat 12	BE-2850 Boom	walter.geens@telenet.be	BE-15	C-J	M	01.11.2018
Bulgaria	Jankov	Nikola	Al.Konstantinovstr19	BG-6300 Haskovo	gnkov34@abv.bg	BG-06	C-J	A/B; BP; M; S	01.08.2017
Bulgaria	Wodenitscharov	Altimir	Svishtovkastr.72	BG-6300 Gabrovo BG-Burgas	conder70@abv.bg	BG-09	B	A/B; BP; M	01.08.2017
Bulgaria	Gantchev	Dimitar	3,Gradnarska str.	BG-4400 Pazardjik		BG-16	B	A/B; FSR; S	01.08.2017
Bulgaria	Nemachko	Nemachko							01.08.2017

Country/s	Name	Surname	Street	Town	Mail	Lizenz- nummer	Quali	Classes	Date of Expiry
Bulgaria	Hristo	Jotov	g.k.istok bl.Jawarow wh.E	BG-7013 Russe		BG-20	B	A/B; M	01.08.2017
Bulgaria	Genov	Evgeni	Str.St.Karadja Nr.86 app.27	BG-6000 Stara Zagora	evgenig@abv.bg	BG-23	A	A/B; BP; M	01.08.2017
Bulgaria	Jotov	Javor	g.k.istok bl.Jawarow wh. E	BG-7013 Russe		BG-27	B	A/B; M	01.08.2017
Bulgaria	Petkov	Petko	31, Khan Krum Str.,	BG-4400, Pazardjik	info@mmplastit.com	BG-34	B	A/B; M	01.08.2017
Bulgaria	Sandev	Svetomir	str.Pilska N 2	BG-7020 Russe	s.sandev@mail.bg	BG-37	A	A/B; BP; M	01.08.2017
Bulgaria	Kovatshev	Ilija	3 Baba Ilitsa str.	BG-1612 Sofia		BG-40	A	EP; NS	01.08.2017
Bulgaria	Ignatov	Petar	24,Rakovski str,bl.3, app 30	BG-2600 Kustendil		BG-42	B	EP	01.08.2017
Belarus	Petrushenko	Viktor S.	Side street Kozlova ti-30	BY-220037 Minsk	vck_eng@tut.by	BY-05	B	FSR	01.08.2017
China	Zhao Jing	Quan		CN-Shanghai	zhao_chn@126.com	CN-01	B	S	01.06.2020
China	Zhang	Hong	No. 66 Xingke North Street,	CN-Jiuliti North Road, Jinniu District 'Chengdu	gongzuo1061066@126.com	CN-03	B	M	01.06.2020
China	Jiang Zhao	Yin	Wuchang district of wuhang city,	CN-hubei province stadium road no.5	1063322012@qq.com	CN-05	B	NS	01.06.2020
China	Tan - Mie	Candy	Room 201,Building 2k,No.2	CN-Yard Youchiang 6th Road, Maiming City 526000 Guangdong	candy_tanwei_jl@126.com	CN-07	B	M	01.06.2020
Czech Rep	Tomasek, Ing.	Zdenek sen.	Štřelecká 3	CZ-466 01 Jablonec n/Nisau	info@klom-admiral.cz	CZ-02	C-J	BP; NS	01.12.2020
Czech Rep	Tomasek, Dr.	Martin	Žousova 3	CZ-46601 Jablonec nad Nisau	tomasek@up.npu.cz	CZ-09	C-J	BP; NS	01.12.2020

Country/s	Name	Surname	Street	Town	Mail	Lizenz- nummer	Quali	Classes	Date of Expiry
Czech Rep	Hanzlik, Ing.	Zdenek	Otakara Nedbala 63/21	CZ-370 01 Ceské Budejovice	hanzlik3@email.cz	CZ-16	C-J	NS; FSR	01.12.2020
Czech Rep	Spirar	Jiri	Cechova 24	CZ-517 24 Borchrádek	spinar@unet.cz	CZ-19	A	BP; NS	01.12.2020
Czech Rep	Kneřs	Ivan	Kostincova 14	CZ-317 02 Písen	kneřs@atlas.cz	CZ-21	C-J	M	01.12.2020
Czech Rep	Navrátilova	Anna	Dr.Krpeky 1389	CZ-530 03 Pardubice	arav@seznam.cz	CZ-28	A	FSR	01.12.2020
Czech Rep	Ferjancic	Bohuslav	U Dubu 481	CZ-373 12 Borovany	ferjancic@volny.cz	CZ-31	A	NS	01.12.2020
Czech Rep	Vasicek	Alois	U Litomysele 231	CZ-66967 Osilek	alovasicsek@tiscali.cz	CZ-33	B	BP	01.12.2020
Germany	Krätschmar	Soeren	Hohestraße 56	DE-01187 Dresden		DE-02	B	FSR	18.05.2020
Germany	Matysik	Dieter	Möhnesrasse 53	DE-46049 Oberhausen	matysik-oberhausen@t-online.de	DE-18	C-J	BP; M	01.12.2016
Germany	Dahm	Michael	Buchenvweg 87	DE-47447 Moers	michaeldahm@t-online.de	DE-25	C-J	M	01.12.2020
Germany	Türck	Eberhard	Haydnstr. 22	DE-27474 Cuxhaven	tuerck-eberhard@t-online.de	DE-33	C-J	BP; NS	01.02.2018
Germany	Jancle	Uwe	Volksdorfer Weg 211	DE-22393 Hamburg	uwe.jancle@gmail.com	DE-43	B	NS	01.06.2017
Germany	Brockinghaus	Werner	Theodor-Pylasstrasse 8	DE-45141 Essen	werner.brockinghaus@strabag.com	DE-46	E	M	01.02.2018
Germany	Fonk	Rainer	Hochstrasse 10	DE-46472 Mülheim	utefo@arcor.de	DE-48	B	M	01.02.2018
Germany	Ruess	Joachim	Hämpfergasse 25	DE-89073 Ulm	goeseledruck.ulm@t-online.de	DE-50	B	M	01.02.2018

Country/s	Name	Surname	Street	Town	Mail	Lizenz- nummer	Quali	Classes	Date of Expiry
Germany	Bober	Hans-Jürgen							
Germany	Scholl	Lutz Rainer	Schlehenweg 10	DE-93173 Wenzelbach	lutz.scholl@t-online.de	DE-53	B	FSR	01.07.2020
Germany	Ritz	Ronny							
Germany	Hansen	Thomas	Dreangel 13 A	DE-24558 Henstedt-Utzburg	ToyHansen@web.de	DE-55	A	FSR	01.07.2020
Germany	Wahl	Frank							
Germany	Tonnessen	Achim	Schmittborn 41	DE-42389 Wuppertal	achim.tonnessen@t-online.de	DE-57	B	NS	01.12.2020
Germany	Boh	Matthias							
Germany	Jankowsky	Hartmut	Oderbergerstrasse 39	DE-16259 Bräitz	janko-44@web.de	DE-60	B	FSR	01.06.2016
Germany	Dieck	Börk							
Germany	Graupmann	Bernhard	Drosselstieg 37	DE-10318 Berlin	bernhardgraubmann@gmx.de	DE-62	C-J	S	01.07.2016
Germany	Ströbl	Rüdiger	Im Mittenheil 48	DE-27472 Cuxhaven	ruediger.stroebi@ewetel.net	DE-65	B	BP; NS	01.04.2017
Germany	Witt	Bodo							
Germany	Hinterseher	Wolfgang	Im Schlag 19	DE-63674 Altenstadt	wolfgang.hinterseher@t-online.de	DE-67	B	BP; NS	01.11.2017
Germany	Hauenschild	Christopher	Salzburgerstrasse 3	DE-30159 Hannover		DE-69	B	FSR	01.06.2018
Germany	Bohn	Klausdieter	Rottweindorferstrasse 2	DE-01796 Plön	k.bohn@freenet.de	DE-71	B	BP; NS	01.12.2018
Germany	Hilmar	Stefan							
Denmark	Reichert	Thomas	Pilehavsvaenge 8	DK-2625 Vallerisbaek	reichert@post12.tele.dk	DK-01	A	NS	26.02.2020
Denmark	Rodt	Bendt							
France	Chauchet	Henri	2, allée Soumelaire	FR-33610 Gestas	henri.chauchet@orange.fr	FR-03	C-J	EP; M	01.04.2020
France	Lasserre	François	3 allée du Clos	FR-64230 Ausseville/Lescar	francois.lasserre6@orange.fr	FR-23	B	BP	01.02.2018
France	Lassoujade	Sylvie	16 allée des Grands Fonds	FR-95180 Monticourt	lassoujade@free.fr	FR-25	B	BP	01.02.2018
France	Costa	Evelyne	5 Rue des Goulvents	FR-92000 Nanterre	evelynecosta@orange.fr	FR-29	B	FSR	01.02.2018

Countrys	Name	Surname	Street	Town	Mail	Lizenz- nummer	Quali	Classes	Date of Expiry
France	Didier	Didier		FR-Chamigny 77	didier_dfr@yahoo.fr	FR-31	B	S	01.02.2018
France	Cécile L.	Cécile	7 Villa de la Berceronnette						
France	Morel	Philippe	Demeurant au 43 rue Raspail	FR-92400 COURBEVOIE	ph-morel@wanadoo.fr	FR-34	B	M	01.12.2017
Great Britain	Robinson	Heather	13 Church Road	GB-Stevington, Bedford	robinsons.10@ttnyworld.co.uk	GB-06	A	A/B	01.10.2018
Great Britain	Barrow	Peter	9 Churton Road Gorton	GB-Manchester M18 7GP	petebarrow@hotmail.com	GB-10	B	M	01.03.2018
Great Britain	Harvey	Martin	8 Clay Hill Enfield	GB-Middlesex EN2 9AA	wagtailtwo@talk21.com	GB-12	B	M	01.03.2018
Croatia	Mitic	Mladen	P. Rudenjkaka 8A	HR-Dubrovnik	mladenmitic@net.hr	HR-05	B	EP	01.03.2018
Hungary	Majeros	Laslo	Kapolna u. 5.	HU-1106 Budapest	laszma1@gmail.com	HU-04	A	M	22.01.2020
Hungary	Varady	Istvan	Zinyi u. 9.	HU-8840 Csurgó	istvanvaradi@t-online.hu	HU-06	B	M	22.01.2020
Hungary	Huvös Dr.	Ferenc	Klauzál square 51/2	HU-6720 Szeged	huvosferenc@mokk.hu	HU-22	B	EP; NS	01.10.2020
Hungary	Bertok	Istvan	Füred utca 14.	HU-9330 Kapuvár		HU-24	B	M	22.01.2020
Hungary	Daniely	Csaba	Szárhegy utca 2.	HU-1173 Budapest		HU-26	B	M	22.01.2020
Hungary	Lakszikov	Zolt	Platan sor 5/a	HU-9800 Nagykanizsa		HU-28	B	M	22.01.2020
Italy	Gralki	Giuseppe	Via A.Gramsci 1714	IT-51036 Iarciano (Pistoia)	GiuseppeGiraldi@libero.it	IT-02	C-J	BP	22.02.2020
Italy	Bigi	Roberto	Via A Volta No 9	IT-42023 Cadelbosco Sopra	info@bigimodel.it	IT-14	B	M	01.06.2018

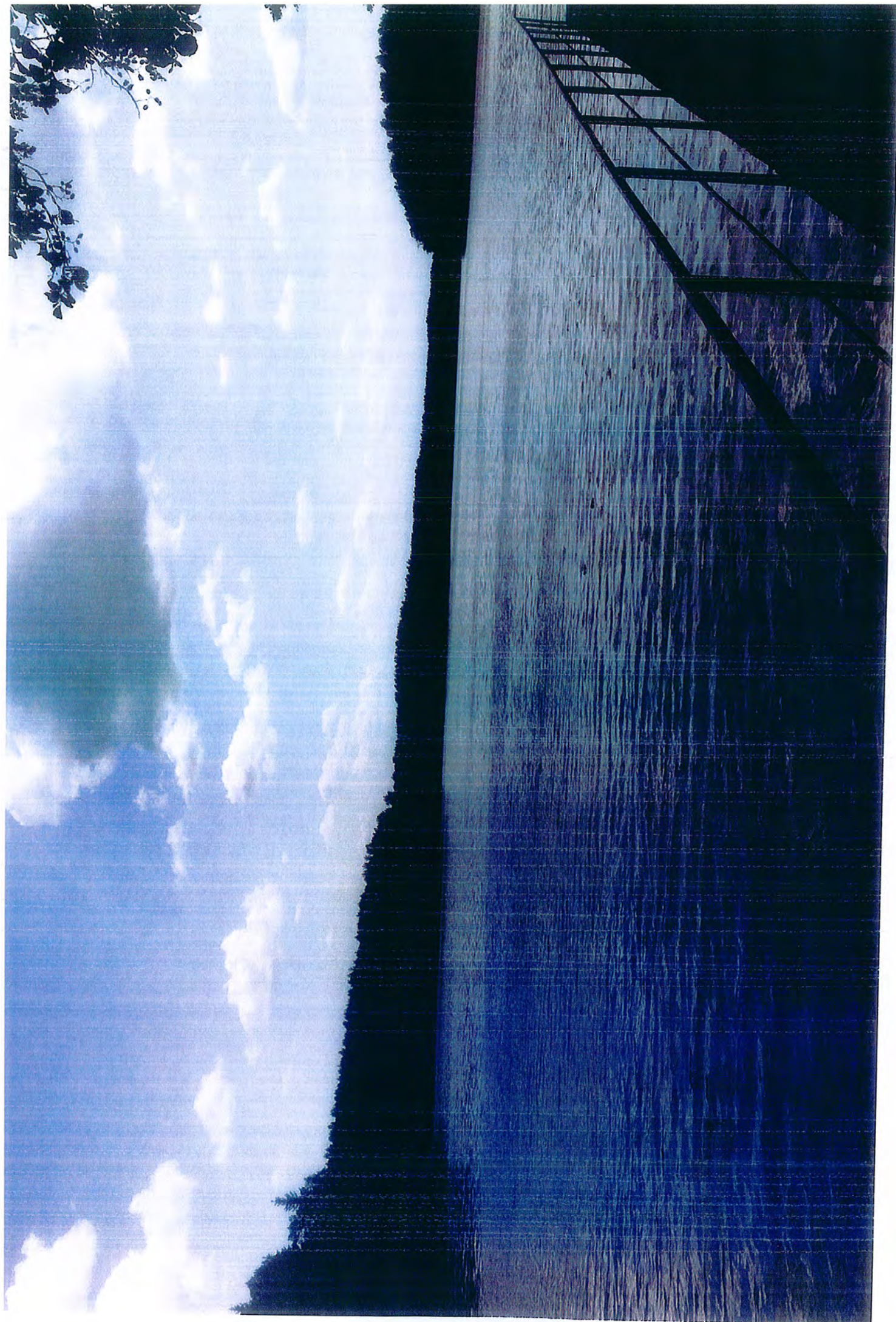
Country	Name	Surname	Street	Town	Mail	Licenz- nummer	Quali	Classes	Date of Expiry
Italia	Carlo	Francisco							
Nederland:	van Gelderen	Martin	Thorbeckelaan 180	NL-4708 KS Roosendaal	m.gelderen@planet.nl	NL-19	C-J	EP	01.05.2020
Nederland:	Stijn	Peter							
Nederland:	Mulder	Arnold jr.	1e Jan van der Heijdenstraat 24-1H	NL-1072 TT Amsterdam	Mail: arnold-mulder@hotmail.com	NL-33	C-J	FSR	01.10.2018
Nieuw-Zeeland	Michael	Anthony							
Poland	Ryszard	Bones	Kobylniki 8	PL-88-150 Kruszwica		PL-01	B	EP	11.05.2020
Poland	Grzegorz	Robert							
Poland	Kruczykiewicz	Mieczysław	ul. Walecznych 36/4	PL-50-341 Wrocław		PL-03	B	EP; FSR	11.05.2020
Poland	Michał	Andrzej							
Poland	Nitecki	Rafał	ul. Steherezady 12	PL-50-195 Poznań		PL-06	E	M	11.05.2020
Poland	Janusz	Ryszard							
Poland	Clanin	Władysław	ul. Poniatowskiego 8/5	PL-59-400 Jawor		PL-09	B	FSR	11.05.2020
Poland	Grzegorz	Andrzej	ul. Podkowa Leśna 13	PL-62-007 Jerzykowo	ackopia@poczta.wp.pl	PL-12	C-J	M	01.03.2020
Poland	Grzegorz	Michał							
Poland	Kordowiecki	Jerzy	ul. Łączna 1a/6	PL-78-300 Świdwin		PL-20	A	EP; S	01.11.2016
Poland	Grzegorz	Marian							
Poland	Lesniewski	Jan	ul. Kresowa 3/12	PL-11-100 Lidzbarsk Warmiński	janlesniewski@op.pl	PL-23	B	EP	01.04.2020
Poland	Grzegorz	Grzegorz	ul. Formińskiego 22/3	PL-08-110 Siedlce		PL-32	B	EP	01.08.2016
Poland	Grzegorz	Grzegorz	ul. Dziesięciny 3/23	PL-15-806 Białystok	grzesiek@modesteam.com.pl	PL-34	C-J	NS; M	01.02.2017
Poland	Grzegorz	Michał							
Poland	Stolarek	Adrian	ul. Chopina 14/4	PL-47-220 Kędzierzyn-Koźle		PL-38	A	M	01.12.2019
Poland	Grzegorz	Andrzej							
Poland	Nagły	Alojzy	ul. Reymonta 8/1	PL-57-200 Zabkowice śl.		PL-40	B	FSR	01.07.2016
Poland	Grzegorz	Grzegorz							
Poland	Kistowski	Dariusz	ul. Jana Kazimierza 64	PL-64-100 Leszno		PL-42	B	S	01.11.2016

Countrys	Name	Surname	Street	Town	Mail	Lizenz- nummer	Quali	Classes	Date of Expiry
Poland	Ktewicki	Jan	ul. Bartodziejska 60A	PL-22-100 Chodzież		PL-43	B	S	01.11.2016
Poland	Springer	Jerzy	ul. Bartodziejska 60A	PL-2-100 Wągrówiec		PL-44	B	S	01.11.2016
Poland	Pieczys	Barbara	ul. Wolności 57	PL-4-7510 Ruda Ślaska	barbara@wp.pl	PL-46	B	M3	01.02.2017
Poland	Maciej	Kozłowski	Józefosław Halczyńska 48m4	PL-05-509 Piaseczno		PL-47	B	M	01.02.2017
Poland	Cichowicz	Zbigniew	ul. Wolności 57	PL-50-500 Józefów		PL-49	B	FSR	01.04.2017
Poland	Walczak	Marek	Dereniowa 4 m 81	PL-02-776 Warszawa		PL-50	B	FSR	01.04.2017
Poland	Wardus	Engelbert	ul. Wolności 57	PL-37-520 Warszawa		PL-61	B	M	01.03.2020
Poland	Zięcina	Wacław	ul. Poznańska 3	PL-97-200 Tomaszów Mazowiecki		PL-62	B	M	01.03.2020
Poland	Szumiak	Kazimierz	ul. Wolności 57	PL-23-400 Opatów		PL-63	B	BP	01.10.2020
Russia	Nazarov	Victor	347923 Rostov reg. Taganrog	RU-Prohladnay str.5 app.5	toy40@mail.ru	RU-04	B	S	01.12.2020
Russia	Serapov	Souleyman	Prohladnay str.5 app.5	RU-162120 Rostov Jaroslavl region	akula0159@mail.ru	RU-07	B	NS	01.04.2016
Russia	Kuznetsov	Alexander	Av. Meforatorov 26-1	RU-162120 Rostov Jaroslavl region		RU-12	C-J	BP; NS	28.02.2020
Russia	Zvonik	Vladimir	Prohladnay str.5 app.5	RU-162120 Rostov Jaroslavl region	g1333@gmail.com	RU-16	B	M3	01.12.2020
Russia	Bogdanov	Alexander	Pr. Pobedy 54-40	RU-164500 Severodvinsk Archangelsk	corvette@edu.severodvinsk.ru	RU-17	C-J	BP; NS	28.02.2020
Russia	Rotenko	Alexander	Prohladnay str.5 app.5	RU-162120 Rostov Jaroslavl region		RU-18	B	M3	01.12.2020
Russia	Samartsev	Nikolay	Vostryatousky proezd 5-3-108	RU-Moscow	samartsev@vandeor.ru	RU-20	B	NS	01.08.2018
Russia	Kuznetsov	Alexey	Prohladnay str.5 app.5	RU-162120 Rostov Jaroslavl region		RU-22	B	NS	28.02.2020
Russia	Bogdanova	Lyudmila	Pr. Makarenko, 3-1	RU-141075 Moscow region, Korolev	corvette.msk@gmail.com	RU-23	B	NS	28.02.2020
Russia	Chichulin	Alexey	Byatlaya 12	RU-302024 Orel	alexch2@vandeor.ru	RU-25	B	NS	28.02.2020
Russia	Polukhovich-Sernitsky	Anatoliy	Stachec 152 app.8	RU-198207 St. Petersburg		RU-26	B	M	01.10.2016
Russia	Vladimir	Kasyan	Sovetskoy 3-2	RU-241050 Bryansk		RU-27	A	M	01.10.2020
Russia	Verity	Nikolay	Krasnodarskaya N147/4, ap.40	RU-344091 Rostov on Don		RU-28	A	M	01.10.2020
Russia	Bogdanov	Dmitry	347923 Rostov reg. Taganrog	RU-344091 Rostov on Don		RU-30	B	NS	01.04.2017
Russia	Graschnkov	Alexander	143000 M. Zukova str.7 app.75	RU-Odintsovo Moscow reg.		RU-31	B	NS	01.04.2017
Russia	Travnikov	Valentin	143000 M. Zukova str.7 app.75	RU-Odintsovo Moscow reg.		RU-32	B	NS	01.04.2017
Russia	Spitsyn	Dmitry	141008 Yubileinaja str. 5-59	RU-Myski		RU-33	B	M	01.10.2020
Russia	Svechardov	Nikolai	Prohladnay str.5 app.5	RU-Orel		RU-34	B	M	01.10.2020

Country/s	Name	Surname	Street	Town	Mail	Lizenz- nummer	Quali	Classes	Date of Expiry
Russia	Trapcznikov	Yuri	Embankment str.46A-54	RUJ-165651 Russia, Arhangelsk reg. Korogma	sudokor@mail.ru	RU-35	E	NS	01.12.2020
Russia	Prisutkin	Alexey	Radishev str. 158, app.73	RU-432027 Russia, Ulyanovsk	prav64@mail.ru	RU-37	B	NS	01.12.2020
Sweden	Jarksten	Eva-Lena	Solhagagatan 102	SE-42535 Hisingns Kärra	eva-lena@erksstar.se	SE-04	A	FSR	01.05.2020
Sweden	Melansak	Janez	Salek 23a	SI-3320 Velenje	janez.melansek@talemach.net	SI-05	C-J	FSR	01.03.2020
Sweden	Skoflek	Avzug	Andraz nad potzela 34 c	SI-3130 Polzeja	avgust.skoflek@gmail.com	SI-08	B	FSR; M	01.04.2020
Sweden	Koban	Melita	Iljeva 7	SI-2000 Maribor	r.koban@gmail.com	SI-13	B	FSR	01.04.2020
Sweden	Pulec	Lea	Volcja Draga 93 b	SI-6253 Volcja Draga	lea.pulec@gmail.com	SI-15	B	FSR	01.12.2016
Ukraine	Novak	Olga	Dneprouzerginskajastr.27a	UA-86139 Ukraine	navijclub.neptur@rambler.ru	UA-04	B	EP	01.04.2017
Ukraine	Demidenko	Sergii	Chernobytskaja 24-26 ap.268	UA-03164 Kiev	fssu@mail.ru	UA-07	C-J	EP; NS; FSR; M	01.09.2017
Ukraine	Paskralova	Larysa	Vasylja Parika str.9 app.86	UA-04208 Kiev	xrx02@ua.fm	UA-11	A	EP; NS; FSR; M	01.10.2020
Ukraine	Mandrika	Valeriy	Tscholkovsco str.7-5 Sumy region Glukhov	UA-41400-Ukraine		UA-13	B	M	01.09.2017
Ukraine	Kadantsev	Sergii	Khreschatik 180 ap.82	UA-Cherkassy		UA-15	B	S	01.10.2020







Generalrules

01.01.2016

General competition rules

NAVIGA

World Organisation for Modelshipbuilding and Modelshipsport
Weltorganisation für Schiffsmodellbau und Schiffsmodellsport
Organisation Mondiale de Navimodelisme et de Sport Nautique

Rules

2016



Competition Rules

General regulations

Referee's orders

Protest orders

Record orders

Validity: from the 1st of February, 2016
for the following model classes

A/B	thethered boats
C	static models
F (NS, FSR, M, S)	radio controiled models

Copyright NAVIGA 2016
Editors: Secretary General

General competition rules

TABLE OF CONTENTS

	page
Definitions:	
General competition rules (AWR)	4
Class rules (KLR)	4
1. Categories, groups and classes of NAVIGA	4
2. Basic and general regulations	4
2.1. Basic regulations	4
2.1.1 Validity of the AWR	4
2.1.2 Official events of NAVIGA	5
2.1.3 Control changes and their validity	5
2.1.4 Changes and supplements of the rules towards security regulations	6
2.1.5 Registration of events of NAVIGA and participation confirmation	6
2.1.6 Application of international referees of NAVIGA	6
2.1.7 Advertising of events of NAVIGA	7
2.1.8 Entry fees	8
2.1.9 Protest fees	8
2.2. Personnel regulations	9
2.2.1 Age groups	9
2.2.2 Competitor and their registration	9
2.2.3 Admitted number of competitors	9
2.2.4 Assistant and representative of the competitor	9
2.2.5 Participation of guests in NAVIGA events	10
2.2.6 Start ban on competition or competing officials	10
2.3. Management of the competitions. Competitions and championships	10
2.3.1 The competition management (competitive management)	10
2.3.2 The jury	11
2.3.3 Duties and responsibilities of the employees of the competition Management, the platform leaders and the construction check and assessment commission (scrutineering)	11
2.3.4 Terms of employment for the management of the competition	13
2.4. Sportive regulations	14
2.4.1 Long-term registration numbers (sports licences)	14
2.4.2 Registration of the competitors and models in an event	14
2.4.3 Assignment of the titles with world championships and continental Championships	15
2.4.4 Honourings of competitors and ledal ceremony at world championships, continental championships, world competitions and continental competitions	15
2.4.5 Result lists	16
2.4.6 Cancellation of classes from the world and continental championships Program	16
2.4.10 Re introduction of classes with world championships And competitions	16
2.4.11 Archiving the documents of world championships continental championships and continental competitions	17
2.4.12 Oath of the competitors and referees	17
2.5 Alcohol and drug ban	18
2.6 physical confrontation	18

General competition rules

3.	NAVIGA - protest order	18
3.1	Competence	18
3.2.	Basic	18
3.3.	Registration of the protest	18
3.4.	Protest negotiations	19
4.	NAVIGA - record order	20
4.1.	Record classes	20
4.2.	Control of the models	21
4.3.	Application for recognition of a record	21
4.4.	Duties of the section leaders and the representative responsible for the Records of NAVIGA	21
5.	The model - measuring letter (only for sections NS and C)	21
	REFEREE'S ORDER OF NAVIGA	22
1.	Area of application	22
2.	General duties and rights of international Referees	23
3.	Conditions for the confirmation as an international referee	23
4.	Classification of international referees	24
5.	Application of international referees	24
6.	Education and check up as an international referee	26
7.	Procedure for confirmation of international referees	27
8.	The international referee's identity card, his validity, Supplements, changes and conditions for his dismissal	27
9.	List of confirmed international referees	28
10.	Communication about personal changes	29
11.	Introduction	29
Appendices:		
Record application		
Model measuring letter		
Referee's application		
Course confirmation		
Referee's protocol		

General competition rules

Definitions:

General competition rules: (AWR)

Rules for the general procedure for the official Naviga events. They stand above the class rules of the sections and may not be overruled by them. They can be changed only by the general assembly and the presidium of the NAVIGA.

Class rules: (KLR)

Are valid for the single classes of the sections. They are worked out by the sections and must be confirmed by the presidium.

1. Categories, Groups and classes of the ship model port of NAVIGA.

- (1) Ship models are divided into model categories which are subdivided by model groups or model classes. This allocation occurs by the type of models, according to its purpose and by cubic capacity or the type of propulsion, specified in the Class' regulations and are prescribed.
- (2) The official writing of the class name is fixed in the class rules of the respective section.

2. Basic and general regulations

2.1. Basic regulations

2.1.1 Validity area of the AWR

- (1) The AWR of NAVIGA are valid for 4 years. A Rule change due to requirements of the environmental protection or for safety reasons can be imposed any time by the presidium
- (2) The AWR of NAVIGA are valid for the following official Naviga Events:

• World championships	Abbreviation	WC
• World competitions	Abbreviation	WW
• Continental championships	Abbreviation	KM
• Continental competitions	Abbreviation	KW
• International competitions	Abbreviation	IW
• International competitions	Abbreviation	IW
- (3) It's recommended to all NAVIGA affiliated countries is to run national events according to these rules.

General competition rules

2.1.2 Official events of the NAVIGA

- (1) As official events according to Pkt. 2.1.1. are valid only those who are included in the competition calendar NAVIGA. The competition calendar is published by the secretary general of NAVIGA. Registration can only go through an affiliated countries Federation.
- (2) An event is recognized as official international competition if besides the organizer at least two other member countries take part in it and an international referee, from another member country is present.
- (3) World championship, WW, KM and KW of NAVIGA are to be carried out every two years in the specific classes of the respective sections. A lengthening of the term by 2 years is possible at the request of the section to the presidium of Naviga at most, however, a lengthening is approved for 4 years.
- (4) World championship, WW, WM, KM and KW of different sections should not take place by the same date.
- (5) The sections can determine the organize or not organize KM or KW themselves. Then the adjustment is presented to the managing presidium for approval.

2.1.3. Control changes and their validity.

- (1) General competition rules
 - (a) Only the Praesidium or the General Assembly meeting have the right to change, modify or cancel the AWR. In the time till the next General Assembly meeting, these changes made by the Praesidium are temporary. They become official for all Naviga events after approval by the next General Assembly meeting
 - (b) Changes of the AWR of basic meaning (e.g., essential rules of the competition procedure) may not be brought into force during the main competition season (From March to October). A transition period of at least 4 months is to be kept, calculated by the announcement in the NAVIGA-information or by communication of the Secretary General to all Affiliated countries' Federations.
 - (c) Class rules:

The class rules are worked out by the control committees of the sections and are presented after being voted by the section meetings at the world championship or WW to the presidium for confirmation.

 - The proposals for class rule changes send in by an affiliated countries' federation send in 8 weeks before the beginning of a world championship or world championship to the section leader, are to be checked by the technical commissions of the respective sections. At the same time these proposals are to be published on the Naviga website.

General competition rules

- At the section meetings of the world championship or WW these proposals are then discussed and voted upon.

In the time between the next New edition of the rules and the next general assembly the changes agreed by the Praesidium are valid as temporary rules. They are valid till approval by the next general assembly for all official events of NAVIGA.

Rule changes for safety reasons, being presented by the technical committee to the Naviga Praesidium become valid after positive advice from the Praesidium, this is done by vote. (see also 2.1.4).

- (d) Changes of the KLR of basic meaning (e.g., essential rules of the construction specifications) may not be brought into force during the main competition season (From March to October). A transition period of at least 4 months is to be kept, calculated from the announcement in the NAVIGA information or by communication of the Secretary General to all affiliated countries' Federations.

2.1.4 Changes and supplements of the rules to security regulations.

Changes and supplements of the rules which concern safety regulations towards the protection of life and health of the competitors or to protect models and other competition technology against possible dangers either serve the environmental protection (eg fuel additive regulations, battery chemistry) can be decided by the presidium with immediate validity. The respective section leaders are to be informed of these instructed changes for safety reasons by the presidium within 6 weeks on announcing.

2.1.5 Registrations of events of NAVIGA and participation confirmations.

- (1) The registration of a Naviga event to be admitted in the competition calendar of NAVIGA must be send in by the 01th of December for next year's calendar at the Secretary General of NAVIGA.
The announcement for an official international competition of NAVIGA can occur only through an affiliated countries' Federation (not from an association or club).

The announcement must contain the following information:

- Kind of the event (according to Pkt. 2.1.1.)
- Title frame of the event
- Classes to be run
- Name and address of the organizer
- Closing date for entries (date of the postmark)

General competition rules

For world championship / continental championship and KM / KW the organizer is to send confirmation of entry of the participant(s) to the respective countries' Federation.

- (2) If fewer competitors to a WM / WW or KM / KW in a model class should register than the quota as stipulated (see Pkt. 2.4.3.), the organizer must mention this in writing 4 weeks before beginning of the world championship to the Federation of those countries of which members registered for that specific class.

2.1.6 Application of international referees of NAVIGA.

The application of referees with world championship / WW and KM / KW is fixed basically in the referee's order.

2.1.7 Announcement of events of NAVIGA.

- (1) Every organizer of a world championship / WW / KM and KW of NAVIGA is obliged to dispatch an announcement to all affiliated Federations of NAVIGA in time. The presidium supplies the addresses of the member countries to the organizer. Moreover, this event will appear in the Naviga info as well as on the Naviga web site.
- (2) The time on before hand this event must be announced is:
- | | |
|---------------------------|----------|
| World championship and WW | 9 months |
| KM and KW | 6 months |
| IW | 4 months |
- in each case before the beginning of the event.
- (3) The announcement must be presented besides in the national language, in one of the official languages of NAVIGA and in English and contain the following information:
- Kind and name of the event,
 - Organizing Federation
 - Organizer,
 - Place and time of the event (arrival date of the participants),
 - Realisation according to the competition rules or rules of competition of NAVIGA (or possibly small changes),
 - Day of the section meeting
 - model classes in which competition will be held,
 - Conditions of participation,
 - Closing date of entries (the closing date for entries at a world championship, WW, KM and KW, cannot be less than 60 days before the arrival date of participants)
 - Date on which registration of competitors and models is closed.
 - Title, medals, documents and prizes which are awarded by the organizer,
 - The materials and equipment which are made available by the organizer,
 - Entry fees (Euro or US Dollar),

General competition rules

- Protest fees (Euro or US Dollar),
- Tips about lodging possibilities,
- Price for fuel (if the classes are competing),
- Information of the frequency bands (MHz) for the radio control which are allowed in the country and other necessary tips for the use of equipment and tools (if the specific classes are competing),
- Tips for the use of pyrotechnics (if the specific classes are competing).

2.1.8 Entry fees.

Entry fees are to be paid for the following official events of the NAVIGA: WORLD CHAMPIONSHIP / WW and KM / KW the amount is set by the sections. Changes can be approved at the request of the section by the general assembly of NAVIGA.

The entry fee consists of an amount for the organizer and the section. The amount for the section serves to cover the costs which originate from the activity of the section.

At WM / WW the section fee amounts to 30% of the entry fees. (Naviga bears the costs of the section leader and the Naviga representative) a subsidy is paid at the rate of 2000 euro to the organizer or is settled with the organizer.

At KM / KW amounts to the section fee 10% of the entry fee (Naviga bears the costs of the section leader). A subsidy is paid at the rate of 1000 euro to the organizer or is settled with the organizer.

The entry fees of the juniors are paid by NAVIGA to the organizer. The organizer has to send to the treasurer of the Naviga after registration, a list of the junior starters.

For spare models no entry fees are demanded.

The entry fees are to be transferred by the respective Federations to the organizer. The section fee is to be transferred after ending of the competition to the bank account of NAVIGA by the organizer. The NAVIGA representative must receive from the organizer a copy of the complete registration lists to the control these fees.

The payment of the section fee has to occur at the end of the event, either through handing over to the Naviga representative or through transfer to the account of the Naviga.

2.1.9 Protest fees

The protest fee is for the intended classes the same in all official events of NAVIGA. Their height is fixed by the general assembly or the presidium. The amount is to be paid either in Euro. The protest fee amounts to 20,- euro from the 1/1/2014.

2.2 Personal regulations.

General competition rules

2.2.1 Age groups.

In NAVIGA events the competitors are divided into two age groups - juniors and seniors.

Considered a junior is someone who is in the year of the event / of competition not older than 18 years.

2.2.2 Competitor and their registration.

- (1) The participation as a competitor to a world championship / WW or KM / KW must occur through registration by a Naviga affiliated Federation. The registration has to be made in time set by the organizer in the announcement. **A participant can represent only a member country of NAVIGA, namely only for the member country whose passport he owns or whose citizen he is.** The only exception is if the participant lives permanently in another member country.
- (2) A national Federation may only announce competitors if it has paid the membership fee according to the commercial instruction of NAVIGA.
- (3) With the delivery of the registration the competitor recognises the conditions of the announcement.

2.2.3 Admissable number of competitors.

The number of admissable competitors (juniors and seniors) at world championships, continental championships, world competitions and continental competitions is to be taken from the regulations of the respective section.

(Set of rules C in 2011 2.2 S.4) (set of rules NS 2016 8.6. S.11)

2.2.4 Assistant and representative of the competitor.

- (1) The number and the duties of assistants are fixed in the Class' regulations of the respective sections.
- (2) A replacement of the competitor at any time on the waters is not permitted.
- (3) For judging or scruteneering of his model(s) the competitor can be represented by his assistant/ representant.

2.2.5 Participation of guests in NAVIGA events.

- (1) The participation of guests at world championship / WW / KM or KW is not possible. At other competitions of NAVIGA, the event leader decides on their participation.

General competition rules

Want a country become a member of Naviga, a fixed number of participants can participate only once after consultation with the section leader. The corresponding entry fees must then also be paid.

2.2.6 Start ban on competition officials or competing officials.

The head referee, Naviga representative or the Technical leader at a WW / world championship / KW / KM or an IW, is not allowed to participate in this event.

Referees may not act in the classes in which they themselves start or take part.

2.3 Management of the competitions. Competitions and championships.

2.3.1 The competition management (competitive management).

- (1) For every official NAVIGA event a competition management or competitive management must be formed. The competition management or competitive management is appointed by the organizer. For world championship / WW and KM / KW the approval is given by the presidium of NAVIGA. The organizer has a proposal right.
- (2) The competition management is responsible for the following duties:
 - Confirmation of the employees of the start places
 - Control and approval of the competition sites
 - Control and confirmation of the registration of participants and models and granting of start authorisation,
 - announcement of the temporary results of the competition,
 - Confirmation of the temporary results as final ones, provided that no protest is pending.
- (3) The competition management or competitive management consists as follows:
 - Representative of the NAVIGA (must be member of the managing presidium), only with world championship and WW
 - Main referee as a chairman,
 - Secretary (is to be put by the organizer),
 - Technical leader (is to be put by the organizer)
 - an authorised representative of the participating countries.
- (4) The main referee is to sent within one month after ending of the event a written report to the presidium of NAVIGA.

2.3.2 The jury

- (1) At world championship, WW, KM, KW and IW a jury is to be formed.

General competition rules

- (2) The job of the jury is to handle protests or any discomfort caused as a direct result the competitive events. Hence, the jury can pronounce disqualifications or confirm them.
- (3) The jury is build as follows:
 - Main referee as leader
 - Representative of NAVIGA
 - At least 2 international referees who can be also formed from the start place leaders not involved in the incident or leaders of the construction examining board
 - Secretary of the competition management (if used) without right to vote.

2.3.3 Duties and responsibilites of the employees of the competition management. The leader of the start places and the construction check and assessment commission.

(1) Main referee

- a) The main referee is the uppermost sportive leader of the competition.
- b) He is entitled to interrupt the event temporarily, to pronounce temporary disqualifications, to immediately arrange changes at the start places and other measures urgently necessary for the event .
- c) He is liable to account for his actions of the competition management.

(2) Representative of NAVIGA (only WC, KM WW and KW)

- a) The representative of NAVIGA has to make sure Naviga rules are respected and upheld at all times. For this purpose he has the right to instruct the main referee for the jury or the competition management to be called together for consultation.
The main referee has to comply with this desire.
- b) The representative of NAVIGA has the right to put a veto against decisions of the main referee or the competition management. If a veto is inserted by the representative of the NAVIGA, the decisions of the main referee or the competition management against which a veto was inserted are invalid.
- c) As a result the competition management will be called up again and then make a final decision. The NAVIGA Representative can be outvoted in technical questions. Not, nevertheless, in questions concerning the general competition rules of NAVIGA for which he has to provide proof, however.

General competition rules

- d) He is obliged to present proposals for the improvement of the rules on grounds of in competitions and competitions to accumulated experiences of the section management and the presidium.
- e) Examination of the start lists, calculation of the section fee as well as realisation of the transfer of the section fees to the account of the Naviga. A proper invoice must be send to the Naviga treasurer, signed by the Section leader, the Naviga representative and authorized people from the organizing Federation.

(3) Secretary of the competition management

- a) The secretary of the competition management has to take the minutes whenever the jury and the competition management meet, and publicly display those minutes afterwards.
- b) He has to update the Registration list to present them to the competition management for confirmation and is responsible for the correctness of the results and their temporary and final announcement after confirmation by the jury or competition management .
- c) According to the extent of the competition a suitable number of employees and a suitable office has to made available to him for to the calculation and control of the competition results by the organizer. These employees and the office are subordinate to the jury or competition management.

(4) Technical leader

- a) The technical leader is responsible for the right arrangement, technical equipment and maintenance of the start places or the competition site. He has to supervise that in the vicinity of 1000 m no remote controls, except those used in the competition are being used.
- b) He is responsible for the recuperation of the models.
- c) The Organizing Federation must supply a number of expert employees as well as suitable equipment. These employees are subordinate to the technical leader and are appointed by him.

(5) Leader of the start place

- a) He is responsible for the proper procedure and to uphold the competition rules at the start place and leads the referees appointed at the start place and employees who are to be supplied by the Organizing countries' Federation. In start places where 2 start place leaders are needed, the main referee decides before the beginning of the competition which one of the 2 is the leader of that start place

General competition rules

- b) The results ascertained by the referees are to be confirmed by the leader of the start place.
 - c) If prescribed by the section rules that the registration of the models must occur through the start place leader, this is to be carried out.
- (6) **Leader of the scruteneering board**
- a) He is responsible for the proper upholding of the competition rules in regard to construction or functional test and is in charge of the referee and assistant appointed to him.
 - b) The results of the scruteneering Commission are to be confirmed by the main referee.
 - c) For certain functions exact minimum requirements in the referee's order are stipulated are described there as well.

2.3.4 Terms of employment for the management of the competition.

- (1) To protect the terms of employment for the competition management or the jury, the construction check commissions or the start place leaders, the organizer is obliged to provide the necessary material and technical conditions. (such as tables, chairs, shelter)
- (2) The respective demands are to be taken from the rules of the concerning sections.
- (3) The jury or competition management has to check before the beginning of the competition the terms of employment. the organizer has to correct any possible fault immediately.
- (4) The strictest attention is to be payed to proper respect of the security regulations of the respective sections. The organizer has to guarantee necessary safeguarding measures which protect the competitors and referees from possible problems in realisation of the competition and also to preserve spectators from possible danger. The competition may begin when the main referee has checked the observance of the security regulations and has considered them in order.
The Organizer must keep a diver at bay for the salvage of sunk models. The participant has to bear the costs for salvaging his model. Salvaging of sunk boats is done in the evening, at the end of the competition for that day. There is to be no practise during the time any boat is salvaged

If security regulations are not kept, the main referee can interrupt the competition even if already running, and if needed to finish the competition completely.

General competition rules

2.4 Sportive regulations.

The sportive regulations for the respective class are to be taken from the competition rules of the respective section.

2.4.1 Permanent registration numbers (sports licences)

Every model used in competition must fulfill the regulations specific for that class of the respective section and the participant must present a suitable build brief (in classes where this is required)

2.4.2 Registration of the competitors and models in an event

- (1) Every competitor is obliged to register himself, his models and spare models and radio control (when prescribed) within the foreseen time frame.
- (2) The models, accompanied by the build brief (see section rules) as well as the registration confirmed by the organizer are to be presented by the competitor by the delegation leader, who collected all of those.

Registration of a participant in absence is possible only by the delegation leader. Models, spare models, build brief and remote control have to be presented at the registration by the delegation leader. They must be available at all times during the competition.

- (3) The registration is to be carried out with the respective start place leader.
- (4) The registration is to be organized by the section leader or the main referee in such a way that it can be carried out in the settled term properly and smoothly, not delaying the start of the competition without any unnecessary loss of time for the competitors. According to the number of competitors and models registration is done in several places, clearly marked, divided by classes. The organizer has to provide enough skilled employees. Specific section regulations specific are to be observed.
- (5) The competitor has to present his models at the registration in the state they will be used in the competition. Any later changes towards those requirements lead to disqualification.
- (6) The registration list are to be filled out according to the specific class requirements.

2.4.3 Assignment of the titles at world championships and continental championships

- (1) For juniors the title of world champion will be awarded if at least 5 competitors from 3 different countries are announced in the concerning class. The title of a

General competition rules

continental master will be awarded if at least 6 competitors are announced in the concerning class.

- (2) For seniors the title of world champion will be awarded if **at least 10 competitors from at least 5 countries** are announced in the concerning class.
The title of continental master will be awarded if at least 10 competitors are announced in the concerning class.
- (3) In the case there are fewer participants announced then foreseen in (1) or (2) in any official announced class, no titles or medals are awarded.

2.4.4 Honourings of the competitors at World championships, Continental championships. To world competitions and continental competitions

- (1) At world championships and continental championships the first 3-placed competitors of every model class and age group receive a gold medal, silver medallion or bronze medal respectively and a diploma.
- (2) In the class F6 as well as with team's models every member of the team receives a medal and a diploma.
- (3) Apart from the first 3-placed at world championships every competitor receives a participation diploma.
- (4) In the C classes the awarding of the medals is done according to the regulations of this model category or model group.
- (5) The results in competitions can be appreciated apart from the title, medals and diplomas by prizes. They are at the organizers discretion.
- (6) The medal ceremony, awarding titles, medals and diplomas is to be done publicly.
- (7) All competitors and members of the competition management are obliged to take part in the winner's honour. A competitor not present, unexcused at the medal ceremony loses the claim to achieved titles, medals, diplomas and prizes. The competition management decides on the validity of the excuse.
- (8) At world championship, KM VV and KW, the documents and medallions may contain advertisement of sponsors. The advertisement must be right discreetly and be approved by the presidium of NAVIGA. The logo of Naviga as well as the flags of Naviga may not be covered by the advertisement of sponsors.

2.4.5 Result lists

The organizer of a NAVIGA event is obliged to hand over at least 3 complete result lists at end of the event (medal ceremony) to every participating

General competition rules

country's Federation. Special requirements are defined in the respective competition rules of the concerning model category.

2.4.6 Cancellation of classes from the world and continental championship programme

To the cancellation of a class from the world and continental championship program of NAVIGA the following conditions must be fulfilled:

- (1) For a world championship every class (except the classes C, F6 and F7) must have at least 10 competitors from 5 countries (with juniors 6 competitors from 3 countries). With a continental championship every class (except the classes C, F6 and F7) should have at least 10 competitors (with juniors 5 competitors). If this is not the case for 3 successive world championships the, the concerning class is stricken from the championship program. Juniors can take part in world- and continental championships in every class (except classes the juniors are not admitted for safety reasons), no minimal number is fixed for juniors. Should there be not enough junior participants in group racing classes, the juniors are to be divided in the groups of seniors.
- (2) In the class F6 and F7 and the classes of the section C at least 4 participants or teams from at least 2 countries have to participate (1 country for continental championships).
- (3) The cancellation of a class from the championship program is to be informed by the presidium immediately after ending of the concerning championship to all affiliated Federations. The section management can decide a cancellation at the section meeting (majority decision of the present countries' representatives) of a world championship and suggest this to the presidium for approval.

2.4.10 Re introduction of classes with world championships and world competitions:

If a section wants to introduce new classes, it has to suggest this to the presidium and announce these classes at the next world championship or the next world competition after been given approval. Then this class has the opportunity to at 2 successive world championships or world competitions reach the demanded least number of participants. If this is not achieved, the class is cancelled again. Each section can decide the introduction of a new class already at the section meeting (majority decision of the present countries' representatives) of the WC / WW and suggest them for approval.

2.4.11 Archiving documents of world championships. Continental championships and continental competitions.

The organizer of a world championship or continental championship or a world competition or continental competition is obliged to keep the following documents for at least three years:

- Announcement

General competition rules

- Registrations lists
- Permits,
- Evaluation lists of the start places and the scruteneering board,
- Documents of the treasurer,
- Competition protocols,
- Protocols of the competition management and the jury,
- Protocol of protest negotiations,
- the final results.

2.4.12 Oath of the competitors and referees

- (1) At world championships and continental championships the competitors and referees have to take an oath at the opening ceremony. This has to be done by a representative of the competitors and of the referees who are to be selected by the organizer.
- (2) The oath is to be taken in German, English and French. Accordingly a competitor and referee are to be selected who belong to a country in which the concerning language is prevailing (see also appendix 2). Moreover, the oath should also be made in the national language of the organizer's country by a participant.
- (3) The **oath for competitors** has the following text which may not be changed:

„In the name of all competitors I promise that we take part in the fair competition in this world championship of NAVIGA (continental championship) and respect the valid rules and will obey, in a spirit of sportive fairness, to the fame of our sport and to the honor of our teams.“

- (2) The **oath for referees** has the following text which may not be changed:

"In the name of all referees and officials I promise that we will fulfill our job impartially, under the rules of NAVIGA and in spirit of sportive fairness at this world championship (continental championship)."

2.5 Alcohol and drug ban

On the area an entire alcohol and drug ban exists from the beginning of the competition of each day up to the end of competition of the day. Should a participant the next day under the influence of drugs or alcohol in the previous evening make the appearance that he cannot steer the model, or be used as a start assistant, he is disqualified immediately for the whole competition and to be banned from the area referred to immediately. Also as a visitor he cannot enter the area no more. This is valid for participants and officials.

General competition rules

- (1) Every protest is to be announced immediately after statement of protest reason to the responsible start place leader orally. The protest is to be submitted in, the in the regulations of the respective section agreed time, in writing to the competition management or the jury in one of the official languages of NAVIGA.
- (2) Announcing or submitting a protest does not exclude the competitor from further participation in the competition. A competitors withdraws on grounds of an announced protest leads to his disqualification for the complete competition. In this case the protest submitted by him is rejected as non-negotiable.
- (3) If any actions are taken, after the protester announced his protest, of which is to be expected to influence the written protest, this is to be informed to the protester before he hands in the written protest and the protest fee.
- (4) The written protest must include:
 - Information of the protest reason (concerning rules, regulations, action, definition),
 - Time, place as well as an exact representation of the incident or the protest reason, perhaps, with sketches and other evidence,
 - Eyewitnesses (in the M and FSR class, name of the competitors assistant) who officialy participate at or manage the event and their readiness to truth fully testify in the protest negotiations
 - The information which start place leader and at what time the protest was announced orally.
- (5) The protest must be signed by the protester and by the team's leader of the concerning Federation.
- (6) At the same time with the written protest is submitted the protest fee is to be deposited, otherwise the protest is not valid and non-negotiable.
- (7) Every section has to add to the set of rules of the section a document to be used for protests.

3.4. Protest negotiations.

- (1) The competition management or the jury (according to competence) is obliged, to negotiate and to decide on the acceptance or refusal of a properly submitted protest, for which the protest fee was deposited. During the protest negotiations the team's leader of the country whose competitor has made the protest has no right to vote.
- (2) If a competitor is accused by the protest to have offended against the rules, the competition management is obliged to initiate the protest procedure against the accused competitor.

General competition rules

4.2. Control of the models.

The control of the models has to occur according to the definitions of the competition rules.

4.3. Application for recognition of a record.

- (1) For the application only the document "application for recognition of a record" may be used. Document according to appendix 3.
- (2) The application must be issued after the competition in triple by the start place leader. The competitor receives the original for the purpose of forwarding it to the representative responsible for the record of NAVIGA. One copy is for the competitor and one copy remains with the organizer.
- (3) The application is to be forwarded within 10 days by the competitor or by his countries federation to the representative responsible for the record of NAVIGA. There is no fee for record approval.
- (4) If a record is broken several times in one day, the competitor who has reached the quickest speed or the highest score is the new record holder. If an achieved record is broken the next day, the record of the day before can also be registered.

4.4. Duties of the section leaders and the representative responsible for the records of NAVIGA.

The section leaders and the representatives responsible for records of NAVIGA supervise the records and are responsible for the recognition of records. In case of doubt the praesidium of NAVIGA decides.

For the approved record a diploma is issued by the representative of Naviga responsible for records and is sent to the record holder.

The Naviga representative responsible for records is responsible for the record list, he informs the NAVIGA affiliated Federations once a year about the status of the Naviga world and continental records by announcement in the NAVIGA info.

5. The build brief (only for sections NS and C)

- (1) If an international build brief is necessary for a model of a class, this is required for every model and team's model. The build brief must correspond Appendix 4 and is to be presented at the registration. It must be available during the complete duration of the competition to the competition management.

General competition rules

- (2) The correctness of all information contained in the build brief must be confirmed by one of the respective countries' Federation representatives with his referee's number. This representative must be in the possession of a valid international NAVIGA - referee's identity card.
- (3) If changes to the model are carried out, so that it does no longer correspond to the information registered in the build brief, a new build brief is to be issued. The medals achieved with the model at world championships, continental championships or continental competitions are to be transferred to this.
- (4) The competition management, the jury and the referees commissioned with the registration, the start place leaders and the leader of the construction assessment commission are entitled to verify the information contained in the build brief for the purpose of comparison of the build brief and model.
- (5) If a competitor or participant presents a build brief on which all information or a part of it does not correspond to the truth, the model is to be disqualified for the concerning competition.
- (6) With loss of a build brief a second build brief which must carry the note "duplicate" on the first page at the top is to be issued. In the duplicate all previous achievements up to this time at world championships and continental championships as well as medals won at world competitions and continental competitions are to be transferred.

REFEREE'S ORDER OF NAVIGA: ISSUED IN 2014

International competitions, continental championships and world championships, as well as world competitions are climaxes in the sportive activity of the ship modellers. They are carried out on basis of the competition rules of NAVIGA. Their proper development the observance of the rules and the exact evaluation are influenced by the qualification of the referees. With his extensive experience and proper decisions the referees help determine the results and achievements of the sportsmen in championships, by proper judgement. This order serves for the uniform and consequent development of the judging.

1. Area of application

The regulations of this order are valid for all member's associations of NAVIGA who carry out official events of NAVIGA, for proposals of confirmation of international referees and the use of international referees. It is also mandatory for international referees.

2. General tasks, duties and rights of international referees

General competition rules

- (1) International referees of NAVIGA have the right and the duty:
 - a) to uphold the competition regulations and competition rules of NAVIGA and to sanction any offence against them.
 - b) to check the equipment and dimensions of the competition sites and competition courses and to request the organizer to fix any defects or errors immediately.
 - c) To confirm records according to the record order of NAVIGA.
 - d) To control models on observance of the construction specifications and to confirm the build brief.
 - e) to sanction sportsman on the basis of the NAVIGA competition rules and disqualify where needed.
 - f) To send referee's protocol to the general secretariat of the NAVIGA after his performance as International referee (see Appendix 1);
 - g) To have confirmed by the organizer his referee's application according to his qualification mentioned in Pkt. 5.
- (2) Referees are not entitled to determine results in competitions, competitions and championships, to value and to confirm in those classes in which they themselves take part as a competitor.

3. Conditions for the confirmation as an international referee

As an international referee can be confirmed, who

- a) belongs to a Federation affiliated to NAVIGA;
- b) by long lasting activity in ship model construction and ship model sport disposing of excellent practical experience and masters the competition rules precisely;
- c) as a rule having reached the minimum age of 25 ;
- d) have the highest qualification as referee of his countries' Federation or has successfully finished a suitable course;
- e) is ready and able to act on requirement as an international referee;
- f) Was suggested by his counties Federation to be confirmed as an international referee with sufficient grounds.

4. Classification of international referees

General competition rules

- (1) International referees are trained, confirmed and used in three qualification levels:

International referee of the level B
International referee of the level A
International referee of the level C-J

- (2) As an international referee of level B can be confirmed he who has successfully finished a course at national level which was carried out under supervision of a representative of the NAVIGA presidium or the responsible section management.
- (3) The confirmation as an international referee of level A requires the successful conclusion of a NAVIGA presidium confirmed course and a successful activity as a referee of level B for a several years or application as a referee with national championships of a national Federation.
- (4) From the circle of international referees of level A chief referees can be appointed at request of the national federations by the presidium of NAVIGA or by the responsible section management.
- (5) Referee authorisation is bound to certain model categories, model groups and model classes. They can be given for several categories, groups and classes if the suitable conditions and qualifications were proven.
- (6) In the ship model construction and ship model sport of NAVIGA referee's authorisations are given for the following sections:

Section M/A, B	Classes all classes
Section NS	Classes F2, F4, DS, NSS
Section FSRV	Classes FSR V all classes FSR H all classes, Offshore
Section M	Classes Eco, FSRE, F1, F3, Mono/Hydro
Section S	Classes all classes
Construction BP	Classes C all classes, F2 all classes, F4B, F6, F7

5. Application of international referees

- (1) The application as an international referee is dependent on the kind of the NAVIGA-event and on the function in this event and requires a certain qualification step.
- (2) With world championships, world competitions and continental championships the application of the international referees occurs through decision of the presidium of the NAVIGA. The concerning land association and the concerning section management can present proposals to the presidium.
- (3) According to referee's order of the NAVIGA the referees must own the at least following least qualifications as a function of her function:

General competition rules

Operational area	WC, WW	KM, KW	IW
Main referee	C-J	C-J	A
Start place leader, leader of the construction examining board (Assessment commission)	C-J	C-J	A
Referee in a construction examining board (Assessment commission)	A,B	A,B	
Time taker	A,B	A,B	
Sound measuring referee	A,B	A,B	
Linesman (F2), referee at start place	A,B	A,B	
Secretary	B	B	B

The secretary in the classes NS, a construction check or at the start place, must own a referee's qualification of the class to be valued.

Key:

WC = World championship
 WW = World competition
 IW = International competition of the NAVIGA

C-J = Upper referee
 A, B = Referee's qualification A or B

- (4) In official events of the NAVIGA the used international referee must be able to come to an agreement into one of the official languages of the NAVIGA enough. Otherwise organizer has to make available an interpreter.
- (5) The organizer has to invite to international competitions and competitions which are included in the competition calendar of the NAVIGA at least one international referee of the NAVIGA from another country than the organizer's country.
- (6) The organizer is obliged to bear the costs for, lodging and catering and to pay a reimbursement day or the equivalent in the currency of the inviting country for the duration of the competition the referee. The height of the reimbursement is settled by the general meeting or the presidium of the NAVIGA.
 The reimbursement is to be paid in the 1st third of the event.
 Currently the following procedure for payment is used:
 Payment of the invited judges, according to the fee schedule 2013
 Day 1 till day 3: 10,- EUR per day
 From day 4 onwards: 5,- EUR per day
- (7) The international referee if is he competitive leader, is obliged, within one month after ending of the event to send a written report to the general secretariat and to the concerning section management of the NAVIGA

General competition rules

(pattern, see appendix 1). The official result list of the event is to be added the report.

- (8) The organizer has to invite at least 6 months before competition beginning the international referee in writing. If this precipitates, the organizer has to take care of another international referee. (The respective section leader suggests referee)
- (9) At short notice an international referee precipitates (e.g., by illness) the land umbrella organization has the right to use an international referee who belongs to the concerning land umbrella organization. For the short-term refusal of an international referee the organizer of the concerning section management must present an unequivocal proof (fax, writing supra &.).

6. Education and check as an international referee

- (1) The acquisition of the qualification as an international referee of the NAVIGA requires a suitable education and check.
- (2) The participation of an applicant in the education can be renounced if knowledge and abilities, e.g., as an active sportsman or model farmer, the demanded conditions and conditions enough is proved by his for many years acquired experience, and is fulfilled.
- (3) The contents of the education are determined by the training programme for international referees of the NAVIGA.
- (4) The education as an international referee of the step A occurs through a central course which is confirmed by the presidium of the NAVIGA.
- (5) The education as an international referee of the step B occurs through courses which a land association carries out by order and under supervision of a representative of the presidium or the responsible section management.
- (6) Every applicant has to prove the demanded knowledge and abilities during a check. The check occurs in verbal and in written form. The uniform and obliging examination questions and exam duties are to be compiled by the section lines and to confirm by the presidium.
They are handed over only to the representatives of the presidium or the section management. The written check can be carried out in programmed form (e.g., forms with 3 alternative answers).
- (7) A check is valid as passed if at least 80% of the questions and duties are answered in the being right or are fulfilled.
- (8) The examination is conducted with courses by the course management.

7. Applications in the confirmation of international referees

General competition rules

NAVIGA

World Organisation for Modelshipbuilding and Modelshipsport
Weltorganisation für Schiffsmodellbau und Schiffsmodellsport
Organisation Mondiale de Navimodélisme et de Sport Nautique

Publisher
General secretariat of the NAVIGA

Jean Marc Vallee
Frankreich

Copyright NAVIGA 2016

Herausgeber Generalsekretariat der NAVIGA

Redaktion:
Michael.Dahm@t-online.de
Michael Dahm
Rembrandstr. 17
47447 Moers
Deutschland

NAVIGA Homepage: www.naviga.org

**Bankverbindung / Bankaccount: Deutsche Bank Duisburg
Germany**

IBAN : DE 30 350700240309610400
SWIFT / BIC : DEUTDEDB 350

Aktuelle Gebühren der NAVIGA	Fees
Gültig ab / valid from 01.01.2015	
Mitgliedsbeitrag / Membership fee Basis	€ 400,-
Mitgliedsbeitrag / Membership fee per Section	€ 100,-
Grant from the NAVIGA to world championships	€ 2000,-
Startgebühr / Starting fee	
Welt-und Kontinentalmeisterschaft	
World- and Conitnentalchampionships	
Senioren / Seniors	€ 15,- bis 30,-
Sektionsgebühr / Section fee (included)	€ 5,- bis 10,-
Junioren / Juniors	€ 10,-
Sektionsgebühr / Section fee (included)	€ 3,-
Protestgebühr / Protest fee	€ -20
Tagessatz Schiedsrichter / Payment of the invided Judges	
Tag 1-3 je Tag / Day 1-3 per day	€ 10,-
ab Tag 4 je Tag / from day 4 per day	€ 5,-

Copyright NAVIGA 2016

Druck und Versand:
Michael Dahm, Rembrandstr.17, D 47447 Moers, Deutschland